



Public Address - Voice Alarm  
Audio Distribution over IP  
Commercial Audio  
Intelligent Acoustic Solutions  
Intercommunication  
Loudspeakers



# CATALOGUE 2012

## *Horn Loudspeakers-V*

DELIVERING YOUR MESSAGE

Public Address - Voice Alarm

Audio Distribution over IP

Commercial Audio

Intelligent Acoustic Solutions

Intercommunication

Loudspeakers



APH10T/EN  
APH20T/EN  
APH30T/EN



Plastic Weatherproof Horn



MSH30/T  
MSH30/TC



### APH - PH Series

The PH - APH range of lightweight plastic weatherproof re-entrant horns has been designed for high quality sound reinforcement. Manufactured in a strengthened ABS molded compound with UVL (ultra violet light) protection and supplied with a high grade stainless steel epoxy coated U bracket. Offering clarity of speech and high efficiency, these horns are suitable for communications or signal warnings. Being non-corrosive and resistant to salt laden air, they are suitable for use indoors and out. In addition they are also ideal for marine and industrial applications as they are unaffected by most chemicals.

The 20 Watt and 30 Watt versions of PH range of plastic horns are now available, as standard, with 1 x PG9 cable gland entries and 1 x PG9 Blanking Plug.

In compliance with BS5839 part 8, the "EN" versions incorporate a ceramic terminal and thermal fuse and are, therefore, suitable for use in voice alarm applications.

### MHS Series

This heavy-duty weatherproof metal re-entrant horn loudspeaker has been designed with the industrial market in mind. Being resistant to salt laden air and non-corrosive makes it suitable for both indoors and outdoors use.

It offers a lockable mounting bracket manufactured in stainless steel, a variable tapping selector switch found in the die cast aluminium chamber as well as ceramic termination and thermal fuse for use in voice alarm applications. (BS5839 part 8 standard) Cable entries are provided enabling loop in loop out installation, avoiding the necessity of using a junction box.

The MHS20/TC is manufactured in part spun and part cast aluminium giving strength and durability. The sound quality is exceptional for a re-entrant horn loudspeaker and is suitable for factories, railways, ports, airports etc

### MSH series

This weatherproof plastic horn loudspeaker combines a re-entrant horn with a high frequency unit and has been developed for clear speech and quality background music reproduction.

The MSH30/T, rated at 30 watts has two drive units, one for low end frequencies and one for high, producing a unique sound quality.

Supplied complete with cable gland, this unit is ideal for areas where more than speech is required, such as indoor and outdoor swimming pools, sports stadiums, leisure centres or even railway stations.

In compliance with BS5839 part 8, the "TC" version incorporates a ceramic terminal and thermal fuse and is, therefore, suitable for use in voice alarm applications.

# Horn Loudspeakers-V

PH10/T  
PH10/TC

PH20/T  
PH20/TC

PH30/T  
PH30/TC  
Plastic Horn

MPS15/T  
MPS15/TC

MPS30/T  
MPS30/TC

Plastic Horn



MHS20/TC

## Horn Loudspeakers-V

Plastic Weatherproof Horn Loudspeaker

**APH Series 4**

Plastic Horn Loudspeaker

**PH series 10**

Metal Horn Loudspeakers

**MHS Series 16**

Plastic Horn Loudspeaker

**MSH series 18**

Plastic Horn Loudspeaker + tweeter

**MPS series 20**

### **MPS series**

Similar to the MSH Series, the MPS Music and Sound Projector is a completely weatherized unit suitable for use in harsh outdoor environments (IP 66).

Despite its rugged nature, the MPS reproduces music with astonishing fidelity.

Smaller than the MSH, the MPS still provides many of the same qualities like high sound pressure levels, directivity and high speech intelligibility.

**IP66**  
**IP66-BS5839-8**

## APH10T/EN

### Plastic Weatherproof Horn Loudspeaker

#### ELECTRICAL

Rated power, Watts:	10
Tappings 100 volt line, Watts:	10/5/2.5/1.25
Transformer Impedance, Ohms, 100V:	1k/2k/4k/8k
Tappings 70.7 volt line, Watts:	5/2.5/1.25/0.625
Driver impedance, Ohms:	8
Effective frequency range, Hz (BSEN60268-5):	340-16KHz
S.P.L. @ 1m, 1 watt, dB, Test Signal Bandwidth 100 Hz-10 kHz:	105
S.P.L. @ Full power /1m Octave Bandwidth, dB:	115
Dispersion at 1 kHz, Degrees :	135
Directivity Axial Q factor, 1kHz:	2.8

#### MECHANICAL

Dimensions, front & depth, mm:	172 x 131 x 227
Net Weight, Kgs:	1.43
Colour (Unless Specified):	Light gray RAL7035
Material:	ABS Plastic housin with UV protection
Mounting:	Stainless stell U bracket & hardware



### APH10T/EN

The APH10T/EN, lightweight plastic weatherproof re-entrant horns has been designed for high quality sound reinforcement. Manufactured in a strengthened ABS molded compound with UVL (ultra violet light) protection and supplied with a high grade stainless steel epoxy coated U bracket. Offering clarity of speech and high efficiency, these horns are suitable for communications or signal warnings. Being non-corrosive and resistant to salt laden air, they are suitable for use indoors and out. In addition they are also ideal for marine and industrial applications as they are unaffected by most chemicals.

With 1 x PG9 cable gland entries allowing the installer to loop in loop out the cabling thus avoiding the need for an additional junction box.

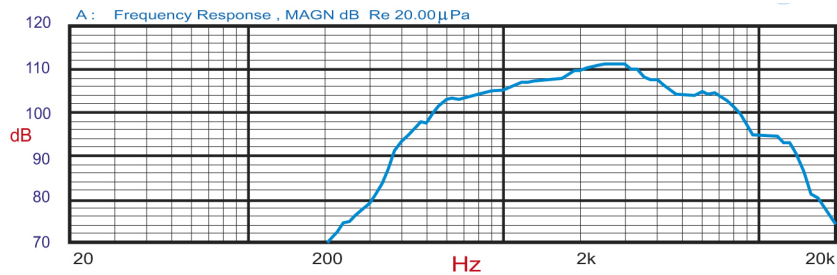
In compliance with BS5839 part 8, the "EN" versions incorporate a ceramic terminal and thermal fuse and are, therefore, suitable for use in voice alarm applications.

# Horn Loudspeakers-V

## APH Series

APH10T/EN

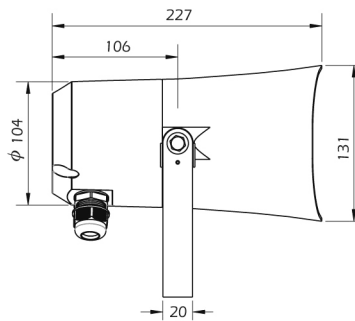
### Speech octave band sensitivity



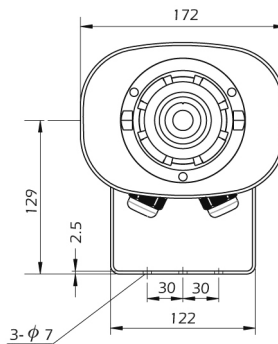
Effective Frequency Range - 340 - 16 kHz

unit : mm

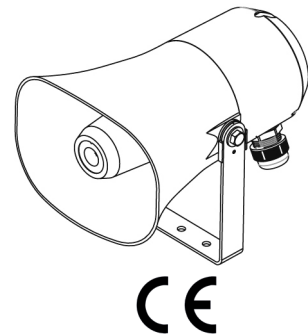
Side view



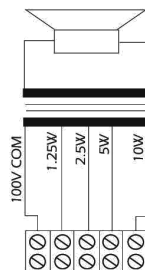
Front view



Perspective view



### Circuit diagram



IP66  
EN54-24

## APH20T/EN

### Plastic Weatherproof Horn Loudspeaker

#### ELECTRICAL

Rated power, Watts:	20
Tappings 100 volt line, Watts:	20/10/5/2.5
Transformer Impedance, Ohms, 100 V:	500/1k/2k/4k
Tappings 70.7 volt line, Watts:	10/5/2.5/1.25
Driver impedance, Ohms:	8
Effective frequency range, Hz (BSEN60268-5):	310-16KHz
S.P.L. @ 1m, 1 watt, dB, Test Signal Bandwidth 100 Hz-10 kHz:	108
S.P.L. @ Full power/1m, Octave Bandwidth, dB:	121
Dispersion at 1k Hz, Degrees :	110
Directivity Axial Q factor, 1k Hz:	4.9

#### MECHANICAL

Dimensions, front & depth, mm:	219 x 157 x 259
Net Weight, Kgs:	2.15
Colour (Unless Specified):	Light gray, RAL7035
Material:	ABS Plastic housing with UV protection
Mounting:	Stainless steel U bracket & hardware



### APH20T/EN

The APH20T/EN, lightweight plastic weatherproof re-entrant horns has been designed for high quality sound reinforcement. Manufactured in a strengthened ABS molded compound with UVL (ultra violet light) protection and supplied with a high grade stainless steel epoxy coated U bracket. Offering clarity of speech and high efficiency, these horns are suitable for communications or signal warnings. Being non-corrosive and resistant to salt laden air, they are suitable for use indoors and out. In addition they are also ideal for marine and industrial applications as they are unaffected by most chemicals.

The 20 Watt and 30 Watt versions of PH range of plastic horns are now available, as standard, with 1 x PG9 and 1 x PG9 Blanking plug cable gland entries allowing the installer to loop in loop out the cabling thus avoiding the need for an additional junction box.

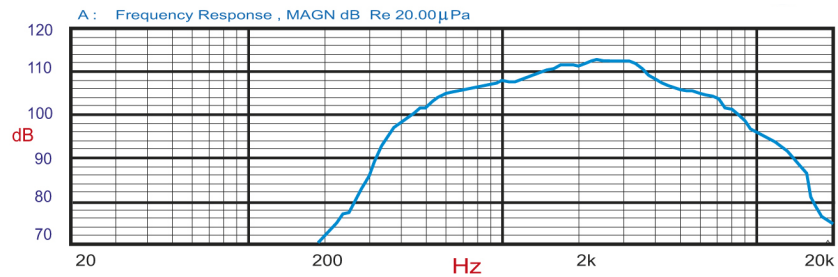
In compliance with BS5839 part 8, the "EN" versions incorporate a ceramic terminal and thermal fuse and are, therefore, suitable for use in voice alarm applications.

# Horn Loudspeakers-V

## APH Series

APH20T/EN

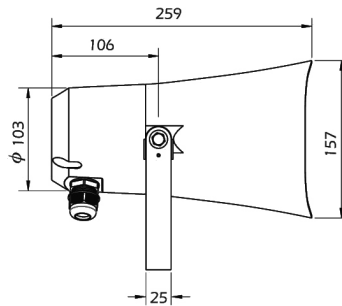
### Speech octave band sensitivity



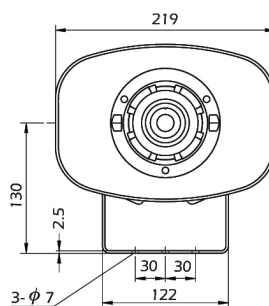
Effective Frequency Range - 310 - 16 kHz

unit : mm

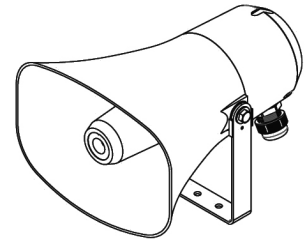
Side view



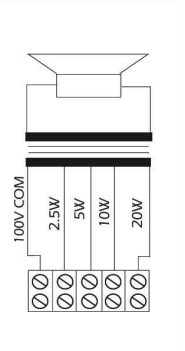
Front view



Perspective view



### Circuit diagram



IP66  
EN54-24

## APH30T/EN

### Plastic Weatherproof Horn Loudspeaker

#### ELECTRICAL

Rated power, Watts:	30
Tappings 100 volt line, Watts:	30/15/7.5/3.75
Transformer Impedance, Ohms, 100 V:	330/660/1.32k/2.64k
Tappings 70.7 volt line, Watts:	15/7.5/3.75/1.875
Driver impedance, Ohms:	8
Effective frequency range, Hz (BSEN60268-5):	300-16KHz
S.P.L. @ 1m, 1 watt, dB, Test Signal Bandwidth 100 Hz-10 kHz:	109
S.P.L. @ Full power/1m, Octave Bandwidth, dB:	123
Dispersion at 1k Hz, Degrees :	110
Directivity Axial Q factor, 1k Hz:	6.20

#### MECHANICAL

Dimensions, front & depth, mm:	258 x 180 x 280
Net Weight, Kgs:	2.55
Colour (Unless Specified):	Cold gray, RAL7035
Material:	ABS Plastic housing with UV protection
Mounting:	Stainless steel U bracket & hardware



### APH30T/EN

The APH30T/EN, lightweight plastic weatherproof re-entrant horns has been designed for high quality sound reinforcement. Manufactured in a strengthened ABS molded compound with UVL (ultra violet light) protection and supplied with a high grade stainless steel epoxy coated U bracket. Offering clarity of speech and high efficiency, these horns are suitable for communications or signal warnings. Being non-corrosive and resistant to salt laden air, they are suitable for use indoors and out. In addition they are also ideal for marine and industrial applications as they are unaffected by most chemicals.

The 20 Watt and 30 Watt versions of PH range of plastic horns are now available, as standard, with 1 x PG9 and 1 PG9 Blanking plug cable gland entries allowing the installer to loop in loop out the cabling thus avoiding the need for an additional junction box.

In compliance with BS5839 part 8, the "EN" versions incorporate a ceramic terminal and thermal fuse and are, therefore, suitable for use in voice alarm applications.

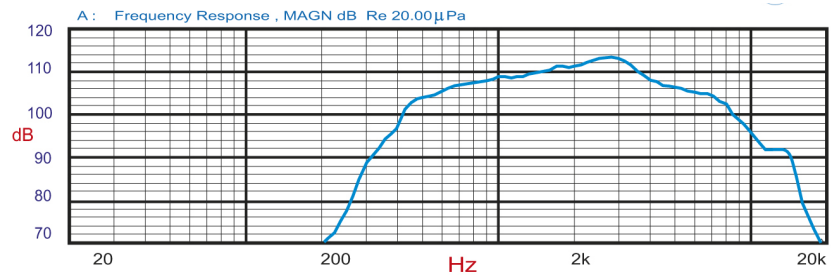


# Horn Loudspeakers-V

## APH Series

APH30T/EN

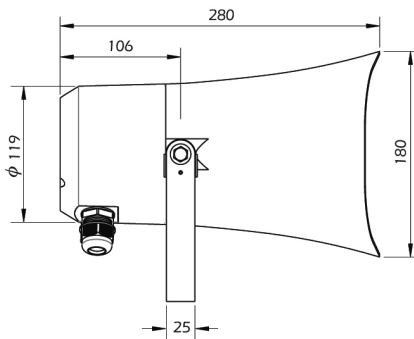
### Speech octave band sensitivity



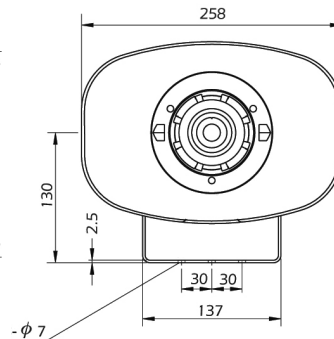
Effective Frequency Range - 300 - 16 kHz

unit : mm

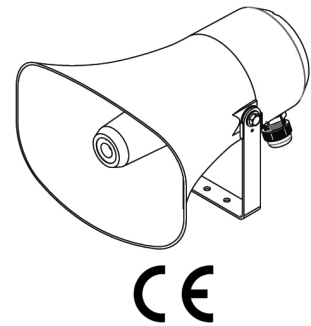
Side view



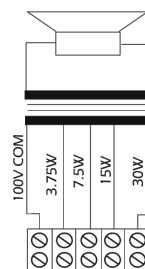
Front view



Perspective view



### Circuit diagram



IP66  
EN54-24

## PH10/T - PH10/TC

### Plastic Horn Loudspeaker

#### ELECTRICAL

Rated power, Watts:	10
Tappings 100 volt line, Watts:	10/5/2.5/1.25
Transformer Impedance, Ohms, 100V:	1k/2k/4k/8k
Tappings 70.7 volt line, Watts:	5/2.5/1.25/0.625
Driver impedance, Ohms:	20
Effective frequency range, Hz (BS EN60268-5):	400-8KHz
S.P.L. @ 1m, 1 watt, dB, Test Signal Bandwidth 100 Hz-10 kHz:	97
S.P.L. @ Full power Octave Bandwidth, dB:	107
Acoustic Power (dB-PWL@1 watt) 1k/2kHz, dB:	95/97
Dispersion at 1k/2k Hz, Degrees :	180/180
Directivity Axial Q factor, 1k/2kHz:	2.8 /6.5

#### ENVIRONMENTAL

IP rating:	IP66
Operating temperature:	-25°C to +45°C

#### MECHANICAL

Dimensions, front & depth, mm:	Ø138 x 200
Net Weight, Kgs:	1.30
Colour (Unless Specified):	Light grey RAL7035
Material:	ABS Plastic housing with UV inhibitors
Mounting:	Stainless Steel U Bracket

PH10/TC is BS5839 Part 8 Voice Alarm compliant.



### PH10/T - PH10/TC

The PH10/T - PH10/TC of lightweight plastic weatherproof re-entrant horns has been designed for high quality sound reinforcement. Manufactured in a strengthened ABS moulded compound with UVL (ultra violet light) protection and supplied with a high grade stainless steel epoxy coated U bracket.

Offering clarity of speech and high efficiency, these horns are suitable for communications or signal warnings. Being non-corrosive and resistant to salt laden air, they are suitable for use indoors and out. In addition they are also ideal for marine and industrial applications as they are unaffected by most chemicals.

With 1 x PG9 cable gland entries allowing the installer to loop in loop out the cabling thus avoiding the need for an additional junction box.

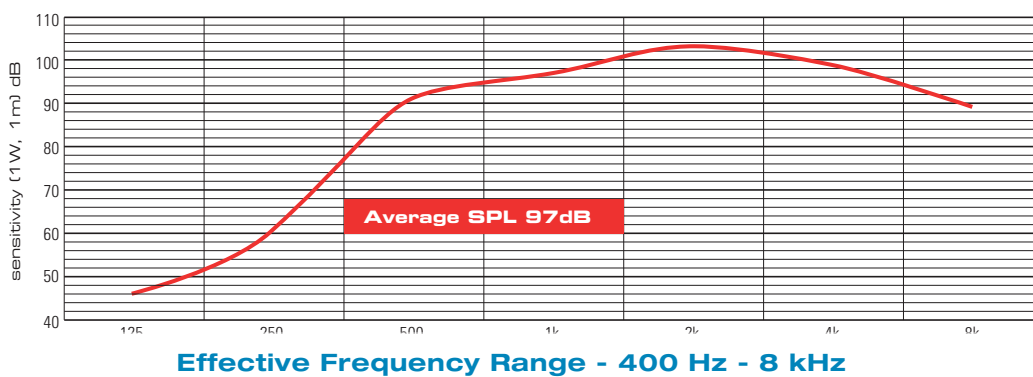
In compliance with BS5839 part 8, the "EN" versions incorporate a ceramic terminal and thermal fuse and are, therefore, suitable for use in voice alarm applications.

# Horn Loudspeakers-V

## PH series

PH10/T  
PH10/TC

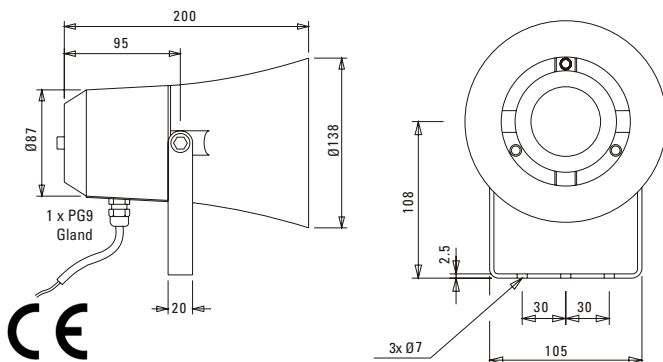
### Speech octave band sensitivity



unit : mm

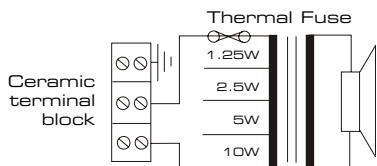
Side view

Front view



### Circuit diagrams

**PH10/TC**  
Circuit diagram 100V Common



IP66  
IP66-BS5839-8

## PH20/T - PH20/TC

### Plastic Horn Loudspeaker

#### ELECTRICAL

Rated power, Watts:	20
Tappings 100 volt line, Watts:	20/10/5/2.5
Transformer Impedance, Ohms, 100V:	500/1k/2k/4k
Tappings 70.7 volt line, Watts:	10/5/2.5/1.25
Driver impedance, Ohms:	20
Effective frequency range, Hz (BSEN60268-5):	250-8KHz
S.P.L. @ 1m, 1 watt, dB, Test Signal Bandwidth 100 Hz-10 kHz:	101
S.P.L. @ Full power Octave Bandwidth, dB:	114
Acoustic Power (dB-PWL@1 watt) 1k/2kHz, dB:	98/98
Dispersion at 1k/2k Hz, Degrees :	130/70
Directivity Axial Q factor, 1k/2kHz:	4.9 /13.6

#### ENVIRONMENTAL

IP rating:	IP66
Operating temperature:	-25°C to +45°C

#### MECHANICAL

Dimensions, front & depht, mm:	Ø203 x 254
Net Weight, Kgs:	1.7
Colour (Unless Specified):	Light grey RAL7035
Material:	ABS Plastic housing with UV inhibitors
Mounting:	Stainless Steel U Bracket

PH20/TC is BS5839 Part 8 Voice Alarm compliant.



### PH20/T - PH20/TC

The PH20/T - PH20/TC of lightweight plastic weatherproof re-entrant horns has been designed for high quality sound reinforcement. Manufactured in a strengthened ABS moulded compound with UVL (ultra violet light) protection and supplied with a high grade stainless steel epoxy coated U bracket.

Offering clarity of speech and high efficiency, these horns are suitable for communications or signal warnings. Being non-corrosive and resistant to salt laden air, they are suitable for use indoors and out. In addition they are also ideal for marine and industrial applications as they are unaffected by most chemicals.

The 20 Watt and 30 Watt versions of PH range of plastic horns are now available, as standard, with 2 x PG9 cable gland entries allowing the installer to loop in loop out the cabling thus avoiding the need for an additional junction box.

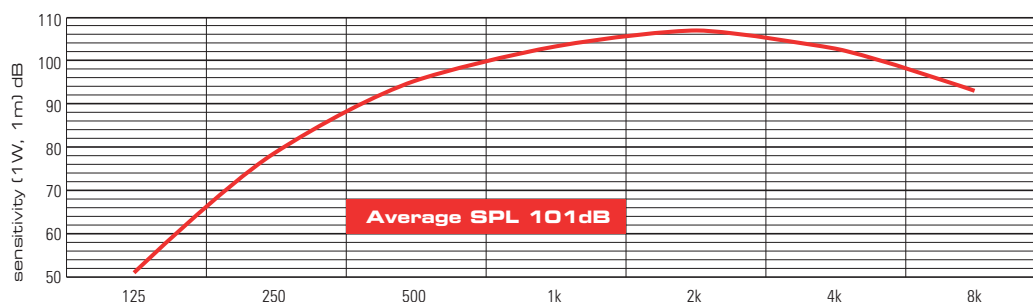
In compliance with BS5839 part 8, the "C" versions incorporate a ceramic terminal and thermal fuse and are, therefore, suitable for use in voice alarm applications.

# Horn Loudspeakers-V

## PH Series

PH20/T  
PH20/TC

### Speech octave band sensitivity

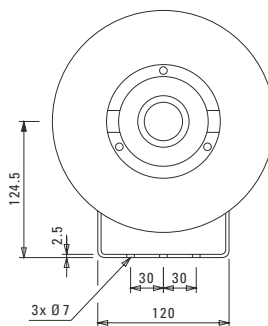
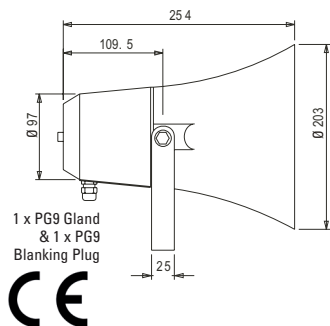


Effective Frequency Range - 250 Hz- 8 kHz

unit : mm

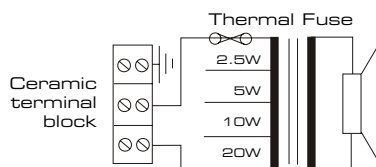
Side view

Front view



### Circuit diagrams

**PH20/TC**  
Circuit diagram 100V Common



IP66  
IP66-BS5839-8

## PH30/T - PH30/TC

### Plastic Horn Loudspeaker

#### ELECTRICAL

Rated power, Watts:	30
Tappings 100 volt line, Watts:	30/15/7.5/3.75
Transformer Impedance, Ohms, 100V:	330/660/1.32k/2.64k
Tappings 70.7 volt line, Watts:	15/7.5/3.75/1.875
Driver impedance, Ohms:	20
Effective frequency range, Hz (BSEN60268-5):	330-8KHz
S.P.L. @ 1m, 1 watt, dB, Test Signal Bandwidth 100 Hz-10 kHz:	103
S.P.L. @ Full power Octave Bandwidth, dB:	118
Acoustic Power (dB-PWL@1 watt) 1k/2kHz, dB:	101/100
Dispersion at 1k/2k Hz, Degrees :	110/70
Directivity Axial Q factor, 1k/2kHz:	6.20 /15.1

#### ENVIRONMENTAL

IP rating:	IP66
Operating temperature:	-25°C to +45°C

#### MECHANICAL

Dimensions, front & depht, mm:	Ø238 x 287
Net Weight, Kgs:	2.3
Colour (Unless Specified):	Light grey RAL7035
Material:	ABS Plastic housing with UV inhibitors
Mounting:	Stainless Steel U Bracket

PH30/TC is BS5839 Part 8 Voice Alarm compliant.



### PH30/T - PH30/TC

The PH30/T - PH30/TC of lightweight plastic weatherproof re-entrant horns has been designed for high quality sound reinforcement. Manufactured in a strengthened ABS moulded compound with UVL (ultra violet light) protection and supplied with a high grade stainless steel epoxy coated U bracket.

Offering clarity of speech and high efficiency, these horns are suitable for communications or signal warnings. Being non-corrosive and resistant to salt laden air, they are suitable for use indoors and out. In addition they are also ideal for marine and industrial applications as they are unaffected by most chemicals.

The 20 Watt and 30 Watt versions of PH range of plastic horns are now available, as standard, with 2 x PG9 cable gland entries allowing the installer to loop in loop out the cabling thus avoiding the need for an additional junction box.

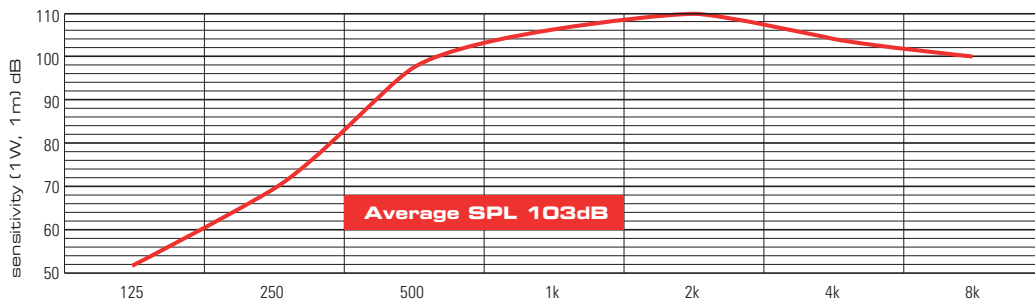
In compliance with BS5839 part 8, the "C" versions incorporate a ceramic terminal and thermal fuse and are, therefore, suitable for use in voice alarm applications.

# Horn Loudspeakers-V

## PH Series

PH30/T  
PH30/TC

### Speech octave band sensitivity

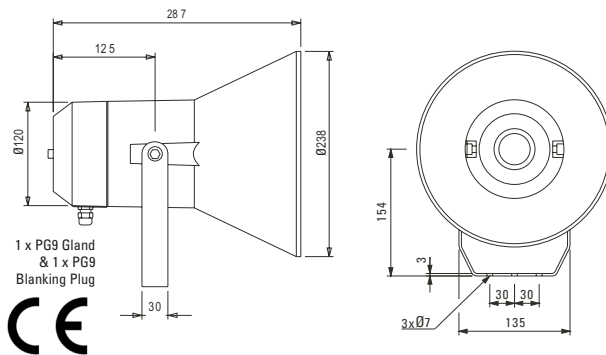


Effective Frequency Range - 330 Hz - 8 kHz

unit : mm

Side view

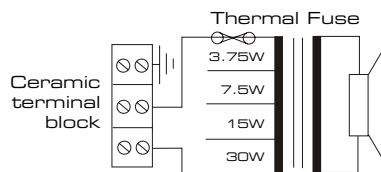
Front view



### Circuit diagrams

#### PH30/TC

Circuit diagram 100V Common



IP66  
IP66-BS5839-8

## MHS20/TC

### Metal Horn Loudspeakers

#### ELECTRICAL

Rated power, Watts:	20
Tappings 100 volt line, Watts:	20/10/5/2.5/1.25
Transformer Impedance, Ohms, 100V:	500/1k/2k/4k
Tappings 70.7 volt line, Watts:	10/5/2.5/1.25
Driver impedance, Ohms:	20
Effective frequency range, Hz (BSEN60268-5):	300-16.5KHz
S.P.L. @ 1m, 1 watt, dB, Test Signal Bandwidth 100 Hz-10 kHz:	101
S.P.L. @ Full power Octave Bandwidth, dB:	114
Acoustic Power (dB-PWL@1 watt) 1k/2kHz, dB:	100/98
Dispersion at 1k/2k Hz, Degrees :	120/80
Directivity Axial Q factor, 1k/2kHz:	4.7/12.5

#### ENVIRONMENTAL

IP rating:	IP66
Operating temperature:	-25°C to +45°C

#### MECHANICAL

Dimensions, front & depth, mm:	Ø217x 297
Net Weight, Kgs:	2.7
Colour (Unless Specified):	Light grey RAL7035
Material:	Die cast aluminium housing
Mounting:	Lockable stainless steel U bracket

BS5839 Part 8 Voice Alarm compliant.



### MHS20/TC

The MHS20/TC, heavy-duty weatherproof metal re-entrant horn loudspeaker has been designed with the industrial market in mind. Being resistant to salt laden air and non-corrosive makes it suitable for both indoors and outdoors use.

It offers a lockable mounting bracket manufactured in stainless steel, a variable tapping selector switch found in the die cast aluminium chamber as well as ceramic termination and thermal fuse for use in voice alarm applications. (BS5839 part 8 standard) Cable entries are provided enabling loop in loop out installation, avoiding the necessity of using a junction box.

The MHS20/TC is manufactured in part spun and part cast aluminium giving strength and durability. The sound quality is exceptional for a re-entrant horn loudspeaker and is suitable for factories, railways, ports, airports etc

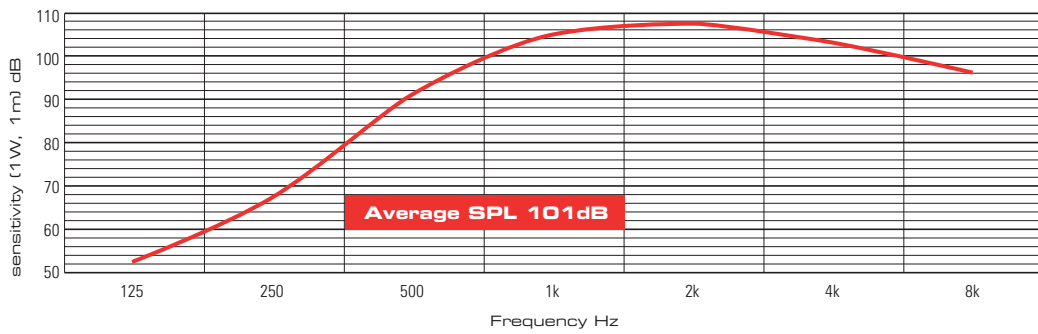


# Horn Loudspeakers-V

## MHS Series

MHS20/TC

### Speech octave band sensitivity

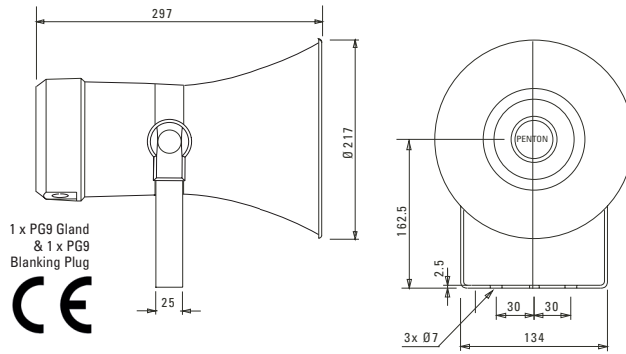


Effective Frequency Range - 300 Hz - 16.5 kHz

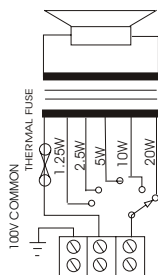
unit : mm

Side view

Side view



### Circuit diagram



IP66  
IP66-BS5839-8

## MSH30/T - MSH30/TC

### Plastic Horn Loudspeaker

#### ELECTRICAL

Rated power, Watts:	30
Tappings 100 volt line, Watts:	30/15/7.5/3.75
Transformer Impedance, Ohms, 100V:	333/667/1.33k/2.66k
Tappings 70.7 volt line, Watts:	15/7.5/3.75/1.875
Driver impedance, Ohms:	8
Effective frequency range, Hz (BSEN60268-5):	70-16.5KHz
S.P.L. @ 1m, 1 watt, dB, Test Signal Bandwidth 100 Hz-10 kHz:	99
S.P.L. @ Full power Octave Bandwidth, dB:	114
Acoustic Power (dB-PWL@1 watt) 1k/2kHz, dB:	91/94
Dispersion at 1k/2k Hz, Degrees : 70/120 Horizontal - 110/110/ Vertical	
Directivity Axial Q factor, 1k/2kHz:	8.5/6.5

#### ENVIRONMENTAL

IP rating:	IP66
Operating temperature:	-25°C to +45°C

#### MECHANICAL

Dimensions, front & depht, mm:	442 x 260 x 287.5
Net Weight, Kgs:	5.5
Colour (Unless Specified):	Light grey RAL7035
Material:	ABS Plastic with UV inhibitors
Mounting:	Aluminium U bracket

MHS30/TC is BS5839 Part 8 Voice Alarm compliant.



### MSH30/T - MSH30/TC

The MSH30/T - MSH30/TC weatherproof plastic horn loudspeaker combine a re-entrant horn with a high frequency unit and has been developed for clear speech and quality background music reproduction.

The MSH30/T, rated at 30 watts has two drive units, one for low end frequencies and one for high, producing a unique sound quality.

Supplied complete with cable gland, this unit is ideal for areas where more than speech is required, such as indoor and outdoor swimming pools, sports stadiums, leisure centres or even railway stations.

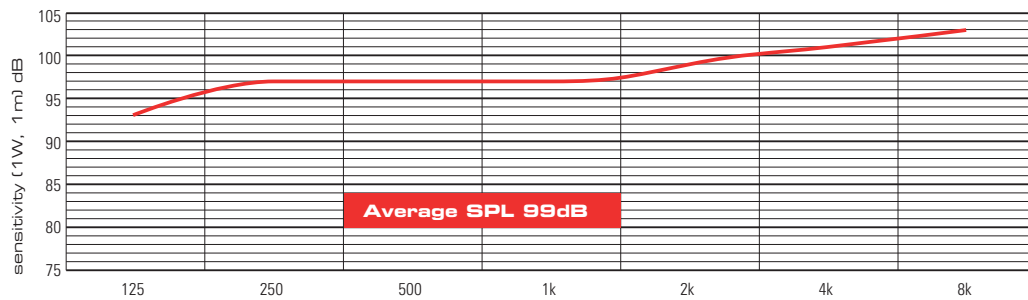
In compliance with BS5839 part 8, the "TC" version incorporates a ceramic terminal and thermal fuse and is, therefore, suitable for use in voice alarm applications.

# Horn Loudspeakers-V

## MSH series

MSH30/T  
MSH30/TC

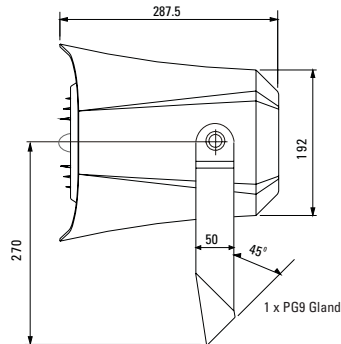
### Speech octave band sensitivity



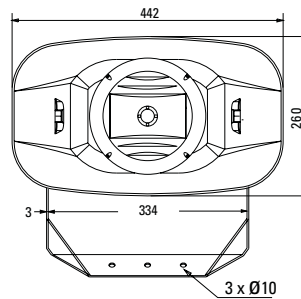
Effective Frequency Range - 70 Hz - 16.5 kHz

unit : mm

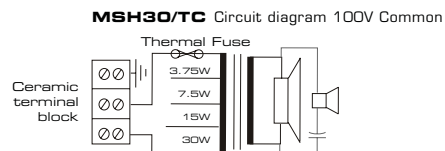
Side view



Side view



### Circuit diagrams



IP66  
IP66-BS5839-8

## MPS15/T - MPS15/TC

### Plastic Horn Loudspeaker + tweeter

#### ELECTRICAL

Rated power, Watts:	15
Tappings 100 volt line, Watts:	15/7.5/3.75/1.875
Transformer Impedance, Ohms, 100V:	667/1.33k/2.66k/5.32k
Tappings 70.7 volt line, Watts:	7.5/3.75/1.875/0.9375
Driver impedance, Ohms:	8
Effective frequency range, Hz (BSEN60268-5):	70-16.5KHz
S.P.L. @ 1m, 1 watt, dB, Test Signal Bandwidth 100 Hz-10 kHz:	97
S.P.L. @ Full power Octave Bandwidth, dB:	109
Acoustic Power (dB-PWL@1 watt) 1k/2kHz, dB:	91/94
Dispersion at 1k/2k Hz, Degrees :	50/30 Horizontal - 90/90/ Vertical
Directivity Axial Q factor, 1k/2kHz:	9.2

#### ENVIRONMENTAL

IP rating:	IP66
Operating temperature:	-25°C to +45°C

#### MECHANICAL

Dimensions, front & depth, mm:	329 x 181 x 297
Net Weight, Kgs:	3.2
Colour (Unless Specified):	Grey RAL7035
Material:	ABS Plastic with UV inhibitors
Mounting:	Aluminium U bracket

MPS15/TC is BS5839 Part 8 Voice Alarm compliant.



### MPS15/T - MPS15/TC

Similar to the MSH Series, the MPS15/T - MPS15/TC Music and Sound Projector are completely weatherized unit suitable for use in harsh outdoor environments (IP 66).

Despite its rugged nature, the MPS reproduces music with astonishing fidelity.

Smaller than the MSH, the MPS15/T - MPS15/TC still provide many of the same qualities like high sound pressure levels, directivity and high speech intelligibility.

# Horn Loudspeakers-V

## MPS series

MPS15/T  
MPS15/TC

Speech octave band sensitivity

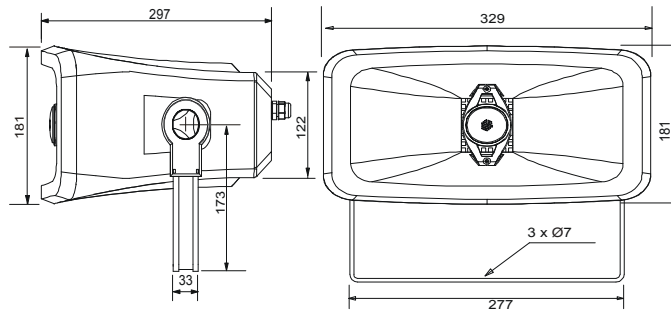


Effective Frequency Range - 70 Hz - 16.5 kHz

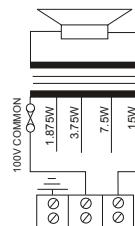
unit : mm

Side view

Front view



Circuit diagram



IP66  
IP66-BS5839-8

## MPS30/T - MPS30/TC

### Plastic Horn Loudspeaker + tweeter

#### ELECTRICAL

Rated power, Watts:	30
Tappings 100 volt line, Watts:	30/15/7.5/3.75
Transformer Impedance, Ohms, 100V:	333/667/1.33k/2.66k
Tappings 70.7 volt line, Watts:	15/7.5/3.75/1.875
Driver impedance, Ohms:	8
Effective frequency range, Hz (BS EN60268-5):	70-16.5KHz
S.P.L. @ 1m, 1 watt, dB, Test Signal Bandwidth 100 Hz-10 kHz:	97
S.P.L. @ Full power Octave Bandwidth, dB:	112
Acoustic Power (dB-PWL@1 watt) 1k/2kHz, dB:	91/94
Dispersion at 1k/2k Hz, Degrees :	50/30 Horizontal - 90/90/ Vertical
Directivity Axial Q factor, 1k/2kHz:	9.2

#### ENVIRONMENTAL

IP rating:	IP66
Operating temperature:	-25°C to +45°C

#### MECHANICAL

Dimensions, front & depth, mm:	329 x 181 x 297
Net Weight, Kgs:	3.6
Colour (Unless Specified):	Light grey RAL7035
Material:	ABS Plastic with UV inhibitors
Mounting:	Aluminium U bracket

MPS30/TC is BS5839 Part 8 Voice Alarm compliant.



### MPS30/T - MPS30/TC

Similar to the MSH Series, the MPS30/T - MPS30/TC Music and Sound Projector are completely weatherized unit suitable for use in harsh outdoor environments (IP 66).

Despite its rugged nature, the MPS reproduces music with astonishing fidelity.

Smaller than the MSH, the MPS30/T - MPS30/TC still provide many of the same qualities like high sound pressure levels, directivity and high speech intelligibility.

# Horn Loudspeakers-V

## MPS Series

MPS30/T  
MPS30/TC

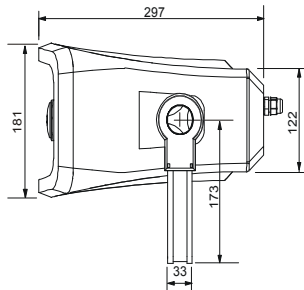
Speech octave band sensitivity



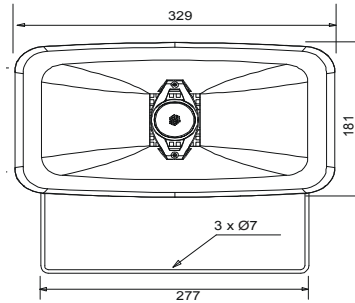
Effective Frequency Range - 70 Hz - 16.5 kHz

unit : mm

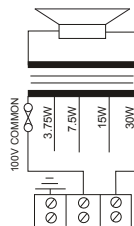
Side view



Front view



Circuit diagram



IP66  
IP66-BS5839-8

Public Address - Voice Alarm

Audio Distribution over IP

Commercial Audio

Intelligent Acoustic Solutions

Intercommunication

Loudspeakers



**ATEIS Europe B.V.**

Sydneystraat 42 - 3047 BP - ROTTERDAM - NETHERLANDS

Phone +31 (0)10 2088690 - Fax +31 (0)10 2088699

[www.ateis-europe.com](http://www.ateis-europe.com)

[info@ateis-europe.com](mailto:info@ateis-europe.com)

DELIVERING YOUR MESSAGE