



LOUDSPEAKER CATALOGUE

Pro Sound Quality & Acoustic Experience

**APC Series****GB Series****CELL Series****CAD Series**

Loudspeakers from PENTON are registered ISO9001 quality approved and have more EN 54-24 certified speakers than any other manufacturers. With over 35 years' experience in the design and production of high quality Public Address and Voice Evacuation (PA/VA) and Audio over IP Products. Supplying well-known companies, for major projects throughout the world, PENTON have a proven track record for designing products that are visually harmonized combined with maximum performance.

LOUDSPEAKERS

Ceiling Speakers

4

Projector Speakers

17

Horn Speakers

20

Column Speakers

25

Wallmount Speakers

26

Spherical Speakers

36

Cabinet Speakers

37

RCS Series

Round Metal Ceiling Loudspeakers

FEATURES

- Excellent reproduction of speech and music
- High acoustical performance
- Elegant and discreet design
- Simple installation

APPLICATIONS

- Hotels
- Restaurants
- Offices
- Train stations
- Bars
- Retails
- Administrations



TECHNICAL CHARACTERISTICS

	RCS 3/T	RCS 4/T	RCS 5/T	RCS 6/T	RCS 8/T
Tapping 100 volts line, watts	6/4/2	4/2/1/0.5/0.25	6/3/1.5/0.75/0.25	6/3/1.5/0.75/0.25	10/5/2.5/1.25
Effective frequency range, Hz	100 - 20,000	130 - 18,000	70 - 17,500	65 - 18,500	65 - 17,000
SPL @ 1 m, 1 watt, dB	87	84	94	95	94
SPL @ 1 m, full power, dB	94	90	102	103	104
Dispersion at 1k/2k Hz, degrees	180/180	180/180	180/180	180/110	180/110
Dimensions, mm	104,5 x 85	132 x 93	189 x 110	239 x 110	280 x 110
Cut-out, mm	85	119	160	190	238
Colour	White RAL9016	White RAL9016	White RAL9016	White RAL9016	White RAL9016
Material	Steel	Steel	Steel	Steel	Steel
IP-rating	21	21	21	21	21
EN 54-24 compliance	No	No	No	No	No
Back cover	No	No	No	No	No

RCS Series



Round Coaxial Metal Ceiling Loudspeakers

FEATURES

- Excellent reproduction of speech and music
- High acoustical performance
- Elegant and discreet design
- Two way speaker
- Simple installation
- Back cover

APPLICATIONS

- Hotels
- Restaurants
- Offices
- Train stations
- Bars
- Retails
- Administrations



TECHNICAL CHARACTERISTICS

	RCS 5/TCOAX	RCS5FTCX/EN	RCS 6/TCOAX	RCS6FTCX/EN	RCS 8/TCOAX	RCS8FTCX/EN
Tapping 100 volts line, watts	10/5/2.5/1.25	10/5/2.5/1.25	10/5/2.5/1.25	10/5/2.5/1.25	20/10/5/2.5	20/10/5/2.5
Effective frequency range, Hz	70 - 18,500	130 - 18,500	65 - 20,000	130 - 18,500	60 - 20,000	100 - 20,000
SPL @ 1 m, 1 watt, dB	91	90	91	92	91	94
SPL @ 1 m, full power, dB	101	100	101	102	104	107
Dispersion at 1k/2k Hz, degrees	180/180	175/136 Horizontal 175/97 Vertical	180/180	164/144 Horizontal 164/143 Vertical	180/100	159/76 Horizontal 159/81 Vertical
Dimensions, mm	189 x 110	189 x 115.7	239 x 110	239 x 115.7	280 x 110	280 x 112.8
Cut-out, mm	160	164	190	200	238	246
Colour	White RAL9016	White RAL9016	White RAL9016	White RAL9016	White RAL9016	White RAL9016
Material	Steel	Steel	Steel	Steel	Steel	Steel
IP-rating	21	21	21	21	21	21
EN 54-24 compliance	No	Yes	No	Yes	No	Yes
Back cover	Yes	Yes	Yes	Yes	Yes	Yes

RCS Series



Round Metal Ceiling Loudspeakers

FEATURES

- Excellent reproduction of speech and music
- High acoustical performance
- Elegant and discreet design
- Simple installation
- Back cover

APPLICATIONS

- Hotels
- Restaurants
- Offices
- Train stations
- Bars
- Retails
- Administrations



TECHNICAL CHARACTERISTICS

	RCS4FT/EN	RCS5FT/EN	RCS6FT/EN	RCS8FT/EN
Tapping 100 volts line, watts	4/2/1/0.5/0.25	6/3/1.5/0.75/0.25	6/3/1.5/0.75/0.25	10/5/2.5/1.25
Effective frequency range, Hz	200 - 18,000	150 - 18,000	180 - 18,000	150 - 17,000
SPL @ 1 m, 1 watt, dB	90	94	94	93
SPL @ 1 m, full power, dB	96	102	102	103
Dispersion at 1k/2k Hz, degrees	176/162 Horizontal 173/166 Vertical	177/93 Horizontal 176/118 Vertical	172/79 Horizontal 173/80 Vertical	159/79 Horizontal 159/81 Vertical
Dimensions, mm	132 x 91.1	189 x 115.7	239 x 115.7	280 x 112.8
Cut-out, mm	119	164	200	246
Colour	White RAL9016	White RAL9016	White RAL9016	White RAL9016
Material	Steel	Steel	Steel	Steel
IP-rating	21	52	55	21
EN 54-24 compliance	Yes	Yes	Yes	Yes
Back cover	Yes	Yes	Yes	Yes

RCS Series



Round Metal Ceiling Loudspeakers with Capacitor

FEATURES

- Excellent reproduction of speech and music
- High acoustical performance
- Elegant and discreet design
- Simple installation
- Back cover
- Capacitor for DC line monitoring

APPLICATIONS

- Hotels
- Restaurants
- Offices
- Train stations
- Bars
- Retails
- Administrations



TECHNICAL CHARACTERISTICS

	RCS4FT/ENC	RCS5FT/ENC	RCS6FT/ENC	RCS8FT/ENC
Tapping 100 volts line, watts	4/2/1/0.5/0.25	6/3/1.5/0.75/0.25	6/3/1.5/0.75/0.25	10/5/2.5/1.25
Effective frequency range, Hz	200 - 18,000	150 - 18,000	180 - 18,000	150 - 17,000
SPL @ 1 m, 1 watt, dB	90	94	94	93
SPL @ 1 m, full power, dB	96	102	102	103
Dispersion at 1k/2k Hz, degrees	176/162 Horizontal 173/166 Vertical	177/93 Horizontal 176/118 Vertical	172/79 Horizontal 173/80 Vertical	159/79 Horizontal 159/81 Vertical
Dimensions, mm	132 x 91.1	189 x 115.7	239 x 115.7	280 x 112.8
Cut-out, mm	119	164	200	246
Colour	White RAL9016	White RAL9016	White RAL9016	White RAL9016
Material	Steel	Steel	Steel	Steel
IP-rating	21	52	55	21
EN 54-24 compliance	Yes	Yes	Yes	Yes
Back cover	Yes	Yes	Yes	Yes

RCS Series



Round Coaxial Metal Ceiling Loudspeakers with Capacitor

FEATURES

- Excellent reproduction of speech and music
- High acoustical performance
- Elegant and discreet design
- Two way speaker
- Simple installation
- Back cover
- Capacitor for DC line monitoring

APPLICATIONS

- Hotels
- Restaurants
- Offices
- Train stations
- Bars
- Retails
- Administrations



TECHNICAL CHARACTERISTICS

	RCS5FTCX/ENC	RCS6FTCX/ENC	RCS8FTCX/ENC
Tapping 100 volts line, watts	10/5/2.5/1.25	10/5/2.5/1.25	20/10/5/2.5
Effective frequency range, Hz	130 - 18,500	130 - 18,500	100 - 20,000
SPL @ 1 m, 1 watt, dB	90	92	94
SPL @ 1 m, full power, dB	100	102	107
Dispersion at 1k/2k Hz, degrees	175/136 Horizontal 175/97 Vertical	164/144 Horizontal 164/143 Vertical	159/76 Horizontal 159/81 Vertical
Dimensions, mm	189 x 115.7	239 x 115.7	280 x 112.8
Cut-out, mm	164	200	246
Colour	White RAL9016	White RAL9016	White RAL9016
Material	Steel	Steel	Steel
IP-rating	21	21	21
EN 54-24 compliance	Yes	Yes	Yes
Back cover	Yes	Yes	Yes

RGS Series

Round Ceiling Loudspeakers



FEATURES

- Simple installation
- Bayonet system
- Back cover
- Capacitor for DC line monitoring (ENC version)

APPLICATIONS

- Hotels
- Restaurants
- Offices
- Train stations
- Bars
- Retails
- Administrations



TECHNICAL CHARACTERISTICS

	RGS 5/T	RGS5FT/EN	RGS5FT/ENC	RGS 6/T	RGS6FT/EN	RGS6FT/ENC
Tapping 100 volts line, watts	6/3/1.5/0.75/0.25	6/3/1.5/0.75/0.25	6/3/1.5/0.75/0.25	6/3/1.5/0.75/0.25	6/3/1.5/0.75/0.25	6/3/1.5/0.75/0.25
Effective frequency range, Hz	100 - 17,500	130 - 17,500	130 - 17,500	100 - 17,500	100 - 17,500	100 - 17,500
SPL @ 1 m, 1 watt, dB	87	90	90	92	94	94
SPL @ 1 m, full power, dB	95	98	98	100	102	102
Dispersion at 1k/2k Hz, degrees	180/160	169/95 Horizontal 170/96 Vertical	169/95 Horizontal 170/96 Vertical	180/180	169/95 Horizontal 170/96 Vertical	169/95 Horizontal 170/96 Vertical
Dimensions, mm	190 x 73	190 x 94	190 x 94	215 x 73	215 x 106	215 x 106
Cut-out, mm	172	172	172	195	195	195
Colour	White RAL9016	White RAL9016	White RAL9016	White RAL9016	White RAL9016	White RAL9016
Material	Steel	Steel	Steel	Steel	Steel	Steel
IP-rating	21	21	21	21	21	21
EN 54-24 compliance	No	Yes	Yes	No	Yes	Yes
Back cover	No	Yes	Yes	No	Yes	Yes

RGS Series

Round A/B Ceiling Loudspeakers

FEATURES

- A/B line mode
- Simple installation
- Bayonet system
- Back cover
- Capacitor for DC line monitoring (ENC version)
- Plastic terminal and without fuse (X version)

APPLICATIONS

- Hotels
- Restaurants
- Offices
- Train stations
- Bars
- Retails
- Administrations



TECHNICAL CHARACTERISTICS

	RGS8FTAB/EN	RGS8FTAB/ENC	RGS8FTABX/EN
Tapping 100 volts line, watts	2 x (6/3/1.5/0.75/0.25)	2 x (6/3/1.5/0.75/0.25)	2 x (6/3/1.5/0.75/0.25)
Effective frequency range, Hz	300 - 17,500	300 - 17,500	300 - 17,500
SPL @ 1 m, 1 watt, dB	82	82	82
SPL @ 1 m, full power, dB	92	92	92
Dispersion at 1k/2k Hz, degrees	147/166 Horizontal 151/73 Vertical	147/166 Horizontal 151/73 Vertical	147/166 Horizontal 151/73 Vertical
Dimensions, mm	265 x 107	265 x 107	265 x 107
Cut-out, mm	238	238	238
Colour	White RAL9016	White RAL9016	White RAL9016
Material	Steel	Steel	Steel
IP-rating	21	21	21
EN 54-24 compliance	Yes	Yes	Yes
Back cover	Yes	Yes	Yes

RLS Series



Round Budget Ceiling Loudspeakers

FEATURES

- Excellent reproduction of speech and music
- Economical
- Simple installation

APPLICATIONS

- Hotels
- Restaurants
- Offices
- Train stations
- Bars
- Retails
- Administrations



TECHNICAL CHARACTERISTICS

	RLS 5/T	RLS 5/FTS	RLS5T/EN	RLS5FTS/EN
Tapping 100 volts line, watts	6/3/1.5	6/3/1.5	6/3/1.5	6/3/1.5
Effective frequency range, Hz	100 - 12,000	100 - 12,000	150 - 18,500	150 - 18,500
SPL @ 1 m, 1 watt, dB	90	90	93	93
SPL @ 1 m, full power, dB	98	98	101	101
Dispersion at 1k/2k Hz, degrees			173/139 Horizontal 184/114 Vertical	167/151 Horizontal 173/146 Vertical
Dimensions, mm	174 x 65	174 x 110	186 x 60	186 x 146
Cut-out, mm	155	155	157	162
Colour	White RAL9016	White RAL9016	White RAL9016	White RAL9016
Material	Steel	Steel	Steel	Steel
IP-rating		21	21	21
EN 54-24 compliance	No	No	Yes	Yes
Back cover	No	Yes	Yes	Yes

RNS Series

Round Budget Metal Ceiling Loudspeakers

FEATURES

- Excellent reproduction of speech and music
- Economical
- Simple installation

APPLICATIONS

- Hotels
- Restaurants
- Offices
- Train stations
- Bars
- Retails
- Administrations



TECHNICAL CHARACTERISTICS

	RNS 5/T	RNS 6/T	RNS 8/T
Tapping 100 volts line, watts	6/3/1.5/0.75/0.25	6/3/1.5/0.75/0.25	6/3/1.5/0.75/0.25
Effective frequency range, Hz	120 - 17,500	110 - 18,500	80 - 18,500
SPL @ 1 m, 1 watt, dB	90	92	92
SPL @ 1 m, full power, dB	97	99	99
Dispersion at 1k Hz, degrees	180	160	130
Dimensions, mm	180 x 59	227 x 59	280 x 72
Cut-out, mm	155	198	244
Colour	White RAL9016	White RAL9016	White RAL9016
Material	Steel	Steel	Steel
IP-rating			
EN 54-24 compliance	No	No	No
Back cover	No	No	No

PCL Series

Round Plastic Ceiling Loudspeakers

FEATURES

- Economical
- Simple installation

APPLICATIONS

- Hotels
- Restaurants
- Offices
- Train stations
- Bars
- Retails
- Administrations



TECHNICAL CHARACTERISTICS

	PCL 5/T	PCL 6/T
Tapping 100 volts line, watts	6/3/1.5/0.75/0.25	6/3/1.5/0.75/0.25
Effective frequency range, Hz	100 - 17,500	85 - 18,500
SPL @ 1 m, 1 watt, dB	83	82
SPL @ 1 m, full power, dB	91	90
Dispersion at 1k/2k Hz, degrees	180/150	180/120
Dimensions, mm	203 x 80	234 x 80
Cut-out, mm	168	194
Colour	White RAL9016	White RAL9016
Material	ABS	ABS
IP-rating	21	21
EN 54-24 compliance	No	No
Back cover	No	No

CCS Series

Round Pro-Sound Ceiling Loudspeakers

FEATURES

- Very good acoustic quality
- Bass reflex
- Two versions are available:
 - 16 ohms (CCS 4 & CCS 6)
 - 100 volts (CCS 4/T & CCS 6/T)

APPLICATIONS

- Hotels
- Restaurants
- Offices
- Train stations
- Bars
- Retails
- Administrations



TECHNICAL CHARACTERISTICS

	CCS 4	CCS 6	CCS 4/T	CCS 6/T
Tapping 100 volts line, watts	30	60	30/15/7.5/3.75	60/30/15/7.5
Effective frequency range, Hz	65 - 19,500	70 - 20,000	65 - 19,500	70 - 20,000
SPL @ 1 m, 1 watt, dB	86	88	86	88
SPL @ 1 m, full power, dB	101	104	101	104
Dispersion at 1k/2k Hz, degrees	180/160	180/160	180/160	180/160
Dimensions, mm	195.5 x 206.74	263 x 214	195.5 x 206.74	263 x 214
Cut-out, mm	168	230	168	230
Colour	White RAL9016	White RAL9016	White RAL9016	White RAL9016
Material	ABS	ABS	ABS	ABS
IP-rating				
EN 54-24 compliance	No	No	No	No
Back cover	Yes	Yes	Yes	Yes

SCS Series

Square Metal Ceiling Loudspeakers

FEATURES

- Excellent reproduction of speech and music
- High sound pressure
- Square form

APPLICATIONS

- Hotels
- Restaurants
- Offices
- Train stations
- Bars
- Retails
- Administrations



TECHNICAL CHARACTERISTICS

	SCS 5/T	SCS 6/T
Tapping 100 volts line, watts	6/3/1.5/0.75/0.25	6/3/1.5/0.75/0.25
Effective frequency range, Hz	85 - 17,000	85 - 18,500
SPL @ 1 m, 1 watt, dB	92	92
SPL @ 1 m, full power, dB	100	100
Dispersion at 1k Hz, degrees	180	160
Dimensions, mm	184 x 184 x 57	220 x 220 x 59
Cut-out, mm	160	182
Colour	White RAL9016	White RAL9016
Material	Steel	Steel
IP-rating	21	21
EN 54-24 compliance	No	No
Back cover	Yes	Yes

BCL Series

Round Bathroom Waterproof Ceiling Loudspeaker

FEATURES

- Compact design
- Economical
- Specifically designed for use in humid and saline environment
- Water and dust resistant, IP55

APPLICATIONS

- Saunas
- SPA
- Aquatic centers
- Showers
- Cloakrooms



TECHNICAL CHARACTERISTICS

	BCL 3/T
Tapping 100 volts line, watts	6/3/1.5
Effective frequency range, Hz	220 - 18,500
SPL @ 1 m, 1 watt, dB	89
SPL @ 1 m, full power, dB	96
Dispersion at 1k Hz, degrees	140
Dimensions, mm	139 x 117.5
Cut-out, mm	115
Colour	White RAL9016
Material	Plastic
IP-rating	55
EN 54-24 compliance	No
Back cover	Yes

CAD Series

Plastic Sound Projectors



FEATURES

- Excellent reproduction of speech and music
- Performance hard to match
- Elegant and modern design
- Simple installation
- Made of a UV-resistant reinforced ABS plastic
- Water and dust resistant, IP66
- Capacitor for DC line monitoring (ENC version)

APPLICATIONS

- Train stations
- Streets
- Schools
- Car parks
- Aquatic centers
- Administrations



TECHNICAL CHARACTERISTICS

	CAD 10/T	CAD10T/EN	CAD10T/ENC	CAD 20/T	CAD 20T/EN	CAD 20T/ENC
Tapping 100 volts line, watts	10/5/2.5/1.25	10/5/2.5/1.25	10/5/2.5/1.25	20/10/5/2.5	20/10/5/2.5	20/10/5/2.5
Effective frequency range, Hz	120 - 18,000	110 - 18,000	110 - 18,000	110 - 18,000	110 - 18,000	110 - 18,000
SPL @ 1 m, 1 watt, dB	90	91	91	91	92	92
SPL @ 1 m, full power, dB	100	101	101	104	105	105
Dispersion at 1k/2k Hz, degrees	180/120	206/111 Horizontal 219/115 Vertical	206/111 Horizontal 219/115 Vertical	180/120	189/126 Horizontal 196/120 Vertical	189/126 Horizontal 196/120 Vertical
Dimensions, front and depth, mm	138 x 204	138 x 204	138 x 204	138 x 204	138 x 204	138 x 204
Colour	White RAL9016	White RAL9016	White RAL9016	White RAL9016	White RAL9016	White RAL9016
Material	ABS	ABS	ABS	ABS	ABS	ABS
IP-rating	66	66	66	66	66	66
EN 54-24 compliance	No	Yes	Yes	No	Yes	Yes

CELL Series

Metal Sound Projectors

FEATURES

- Simple installation
- Anti-vandal protected metal housing
- Water and dust resistant
- Capacitor for DC line monitoring (ENC version)

APPLICATIONS

- Train stations
- Streets
- Aquatic centers
- Schools
- Car parks
- Administrations



TECHNICAL CHARACTERISTICS

	CELL 10/T	CELL10T/EN	CELL10T/ENC	CELL 20/T	CELL20T/EN	CELL20T/ENC
Tapping 100 volts line, watts	10/5/2.5/1.25	10/5/2.5/1.25	10/5/2.5/1.25	20/10/5/2.5	20/10/5/2.5	20/10/5/2.5
Effective frequency range, Hz	120 - 18,000	120 - 18,000	120 - 18,000	110 - 16,000	110 - 16,000	110 - 16,000
SPL @ 1 m, 1 watt, dB	91	92	92	88	91	91
SPL @ 1 m, full power, dB	101	102	102	101	104	104
Dispersion at 1k/2k Hz, degrees	180/120	203/116 Horizontal 199/118 Vertical	203/116 Horizontal 199/118 Vertical	180/120	208/123 Horizontal 210/121 Vertical	208/123 Horizontal 210/121 Vertical
Dimensions, front and depth, mm	140 x 191	140 x 191	140 x 191	140 x 191	140 x 191	140 x 191
Colour	White RAL9016	White RAL9016	White RAL9016	White RAL9016	White RAL9016	White RAL9016
Material	Aluminium	Aluminium	Aluminium	Aluminium	Aluminium	Aluminium
IP-rating	55	66	66	55	66	66
EN 54-24 compliance	No	Yes	Yes	No	Yes	Yes

CELL Series

Metal Bi-Directional Sound Projectors



FEATURES

- Excellent reproduction of speech and music
- 2 built-in speakers
- Simple installation, ceiling or wall
- Anti-vandal protected metal housing
- Water and dust resistant, IP55
- Capacitor for DC line monitoring (ENC version)

APPLICATIONS

- Train stations
- Streets
- Aquatic centers
- Schools
- Car parks
- Administrations



TECHNICAL CHARACTERISTICS

	CELL 10/BDT	CELL10BT/EN	CELL10BT/ENC	CELL 20/BDT
Tapping 100 volts line, watts	20/10/5/2.5	20/10/5/2.5	20/10/5/2.5	40/20/10/5
Effective frequency range, Hz	120 - 18,000	120 - 18,000	120 - 18,000	120 - 18,000
SPL @ 1 m, 1 watt, dB	88	88	88	87
SPL @ 1 m, full power, dB	101	101	101	103
Dispersion at 1k/2k Hz, degrees	160/120	158/222 Horizontal 130/211 Vertical	158/222 Horizontal 130/211 Vertical	160/120
Dimensions, front and depth, mm	140 x 196	230 x 192 x 174	230 x 192 x 174	140 x 196
Colour	White RAL9016	White RAL9016	White RAL9016	White RAL9016
Material	Aluminium	Aluminium	Aluminium	Aluminium
IP-rating	55	55	55	55
EN 54-24 compliance	No	Yes	Yes	No

APH Series

Weatherproof Horn Loudspeakers

FEATURES

- High acoustical performance
- Made of a UV-resistant reinforced ABS plastic
- Specifically designed for use in humid and saline environment
- Water and dust resistant, IP66

APPLICATIONS

- Trains stations
- Streets
- Small stadiums
- Industrial sites



TECHNICAL CHARACTERISTICS

	APH10T/ENC	APH20T/ENC	APH30T/ENC
Tapping 100 volts line, watts	10/5/2.5/1.25	20/10/5/2.5	30/15/7.5/3.75
Effective frequency range, Hz	340 - 16,000	310 - 16,000	340 - 16,000
SPL @ 1 m, 1 watt, dB	105	104	106
SPL @ 1 m, full power, dB	115	117	120
Dispersion at 1k/2k Hz, degrees	139/74 Horizontal 173/96 Vertical	111/62 Horizontal 148/84 Vertical	105/49 Horizontal 142/68 Vertical
Dimensions, front and depth, mm	172 x 131 x 227	219 x 157 x 259	258 x 180 x 280
Colour	Grey RAL7035	Grey RAL7035	Grey RAL7035
Material	Plastic	Plastic	Plastic
IP-rating	66	66	66
EN 54-24 compliance	Yes	Yes	Yes

PH Series

Weatherproof Horn Loudspeakers

FEATURES

- Simple installation
- Made of a UV-resistant reinforced ABS plastic
- Specifically designed for use in humid and saline environment
- Water and dust resistant

APPLICATIONS

- Trains stations
- Streets
- Small stadiums
- Industrial sites



TECHNICAL CHARACTERISTICS

	PH 10/T	PH 20/T	PH 30/T
Tapping 100 volts line, watts	10/5/2.5/1.25	20/10/5/2.5	30/15/7.5/3.75
Effective frequency range, Hz	400 - 8,000	250 - 8,000	330 - 8,000
SPL @ 1 m, 1 watt, dB	97	101	103
SPL @ 1 m, full power, dB	107	114	118
Dispersion at 1k/2k Hz, degrees	180/110	130/70	110/70
Dimensions, front and depth, mm	138 x 200	203 x 254	238 x 287
Colour	Grey RAL7035	Grey RAL7035	Grey RAL7035
Material	Plastic	Plastic	Plastic
IP-rating	56	56	66
EN 54-24 compliance	No	No	No

MHS Series

Weatherproof Metal Horn Loudspeakers

FEATURES

- Metal housing
- Water and dust resistant, IP66
- Capacitor for DC line monitoring

APPLICATIONS

- Trains stations
- Streets
- Small stadiums
- Industrial sites



TECHNICAL CHARACTERISTICS

	MHS20T/ENC
Tapping 100 volts line, watts	20/10/5/2.5/1.25
Effective frequency range, Hz	300 - 16,500
SPL @ 1 m, 1 watt, dB	105
SPL @ 1 m, full power, dB	118
Dispersion at 1k/2k Hz, degrees	143/66 Horizontal 143/66 Vertical
Dimensions, front and depth, mm	217 x 297
Colour	Grey RAL7035
Material	Aluminium
IP-rating	66
EN 54-24 compliance	Yes

MSH Series



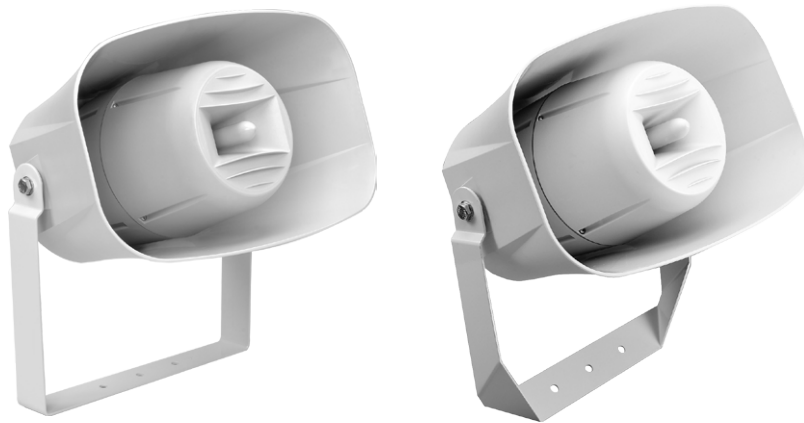
Weatherproof Music Horn Loudspeakers

FEATURES

- Excellent reproduction of music
- Excellent audio quality
- Simple installation
- Made of a UV-resistant reinforced ABS plastic
- Specifically designed for use in humid and saline environment
- Water and dust resistant
- Capacitor for DC line monitoring (ENC version)

APPLICATIONS

- Trains stations
- Streets
- Small stadiums
- Industrial sites



TECHNICAL CHARACTERISTICS

	MSH 30/T	MSH30T/EN	MSH30T/ENC	MSH 60/T
Tapping 100 volts line, watts	30/15/7.5/3.75	30/15/7.5/3.75	30/15/7.5/3.75	60/30/15/7.5
Effective frequency range, Hz	70 - 16,500	70 - 16,500	70 - 16,500	60 - 16,500
SPL @ 1 m, 1 watt, dB	99	100	100	99
SPL @ 1 m, full power, dB	114	115	115	117
Dispersion at 1k/2k Hz, degrees	70/120 Horizontal 110/110 Vertical	56/98 Horizontal 96/52 Vertical	56/98 Horizontal 96/52 Vertical	100/120 Horizontal 60/120 Vertical
Dimensions, front and depth, mm	442 x 260 x 287.5	442 x 260 x 287.5	442 x 260 x 287.5	440 x 270 x 290
Colour	Grey RAL7035	Grey RAL7035	Grey RAL7035	Grey RAL7035
Material	Plastic	Plastic	Plastic	Plastic
IP-rating	66	66	66	65
EN 54-24 compliance	No	Yes	Yes	No

MPS Series

Music Horn Loudspeakers

FEATURES

- Excellent reproduction of music
- Excellent audio quality
- Compact design
- Simple installation
- Made of a UV-resistant reinforced ABS plastic
- Specifically designed for use in humid and saline environment
- Water and dust resistant
- Capacitor for DC line monitoring (ENC version)

APPLICATIONS

- Trains stations
- Streets
- Small stadiums
- Industrial sites



TECHNICAL CHARACTERISTICS

	MPS 15/T	MPS15T/ENC	MPS 30/T
Tapping 100 volts line, watts	15/7.5/3.75/1.875	15/7.5/3.75/1.875	30/15/7.5/3.75
Effective frequency range, Hz	70 - 16,500	70 - 16,500	70 - 16,500
SPL @ 1 m, 1 watt, dB	97	97	97
SPL @ 1 m, full power, dB	109	109	112
Dispersion at 1k/2k Hz, degrees	50/30 Horizontal 90/90 Vertical	91/52 Horizontal 151/102 Vertical	50/30 Horizontal 90/90 Vertical
Dimensions, LxHxP, mm	329 x 181 x 297	334 x 181 x 295	329 x 181 x 297
Colour	Grey RAL7035	Grey RAL7035	Grey RAL7035
Material	Plastic	Plastic	Plastic
IP-rating	33	33	65
EN 54-24 compliance	No	Yes	No

MCS Series

2-Way Metal Column Loudspeakers

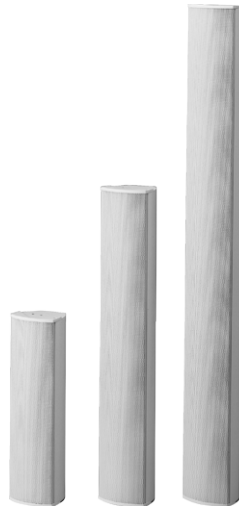


FEATURES

- Excellent reproduction of speech and music
- High acoustical performance
- Elegant and modern design
- Specifically designed for use in areas with complex acoustics
- Water and dust resistant, IP55

APPLICATIONS

- Train stations
- Subway stations
- Airports
- Houses of worship
- Administrations



TECHNICAL CHARACTERISTICS

	MCS20T/EN	MCS20T/ENC	MCS40T/EN	MCS40T/ENC	MCS80T/EN	MCS80T/ENC
Tapping 100 volts line, watts	20/10/5/2.5	20/10/5/2.5	40/20/10/5	40/20/10/5	80/40/20/10	80/40/20/10
Effective frequency range, Hz	170 - 17,000	170 - 17,000	170 - 18,000	170 - 18,000	180 - 18,000	180 - 18,000
SPL @ 1 m, 1 watt, dB	92	92	94	94	98	98
SPL @ 1 m, full power, dB	105	105	110	110	117	117
Dispersion at 1k/2k Hz, degrees	179/140 Horizontal 100/28 Vertical	179/140 Horizontal 100/28 Vertical	231/156 Horizontal 45/20 Vertical	231/156 Horizontal 45/20 Vertical	175/131 Horizontal 35/14 Vertical	175/131 Horizontal 35/14 Vertical
Dimensions, L x H x P, mm	98 x 368 x 90	98 x 368 x 90	98 x 615 x 90	98 x 615 x 90	98 x 970 x 90	98 x 970 x 90
Colour	White RAL9016	White RAL9016	White RAL9016	White RAL9016	White RAL9016	White RAL9016
Material	Aluminium	Aluminium	Aluminium	Aluminium	Aluminium	Aluminium
IP-rating	55	55	55	55	55	55
EN 54-24 compliance	Yes	Yes	Yes	Yes	Yes	Yes

PBC Series



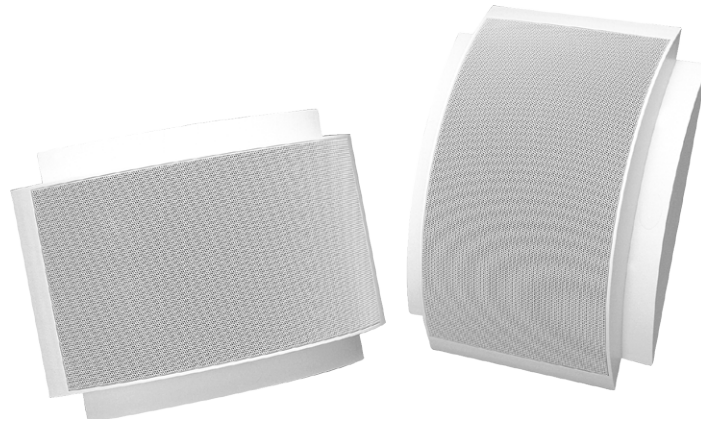
Moulded Cabinet Loudspeakers

FEATURES

- Excellent reproduction of speech and music
- High efficiency (6W versions)
- Exceptional acoustic quality (10W versions)
- Two way speaker (COAX and CX versions)
- Elegant and modern design
- Simple installation
- Made of a UV-resistant reinforced ABS plastic
- Capacitor for DC line monitoring (ENC version)

APPLICATIONS

- Schools
- Restaurants
- Reception rooms
- Museums
- Hotels
- Administrations
- Medical offices



TECHNICAL CHARACTERISTICS

	PBC 6/T	PBC6T/EN	PBC6T/ENC	PBC 10/TCOAX	PBC10TCX/EN	PBC10TCX/ENC
Tapping 100 volts line, watts	6/3/1.5/0.75/0.25	6/3/1.5/0.75/0.25	6/3/1.5/0.75/0.25	10/5/2.5/1.25	10/5/2.5/1.25	10/5/2.5/1.25
Effective frequency range, Hz	160 - 18,000	160 - 18,000	160 - 18,000	80 - 20,000	80 - 20,000	80 - 20,000
SPL @ 1 m, 1 watt, dB	96	95	95	89	89	89
SPL @ 1 m, full power, dB	104	102	102	99	99	99
Dispersion at 1k/2k Hz, degrees	180/120	119/100 Horizontal 77/99 Vertical	119/100 Horizontal 77/99 Vertical	180/120	132/96 Horizontal 169/96 Vertical	132/96 Horizontal 169/96 Vertical
Dimensions, L x H x P, mm	330 x 240 x 90	330 x 240 x 90	330 x 240 x 90	330 x 240 x 90	330 x 240 x 90	330 x 240 x 90
Colour	White RAL9016	White RAL9016	White RAL9016	White RAL9016	White RAL9016	White RAL9016
Material	Plastic	Plastic	Plastic	Plastic	Plastic	Plastic
IP-rating	21	21	21	21	21	21
EN 54-24 compliance	No	Yes	Yes	No	Yes	Yes

PWC Series

Moulded Cabinet Loudspeakers



FEATURES

- Compact design
- Economical
- Simple installation
- Made of a UV-resistant reinforced ABS plastic
- Capacitor for DC line monitoring (ENC version)

APPLICATIONS

- Schools
- Restaurants
- Reception rooms
- Museums
- Hotels
- Administrations
- Medical offices



TECHNICAL CHARACTERISTICS

	PWC 6/T	PWC6T/EN	PWC6T/ENC
Tapping 100 volts line, watts	6/3/1.5/0.75/0.25	6/3/1.5/0.75/0.25	6/3/1.5/0.75/0.25
Effective frequency range, Hz	200 - 18,500	220 - 18,500	220 - 18,500
SPL @ 1 m, 1 watt, dB	93	93	93
SPL @ 1 m, full power, dB	100	100	100
Dispersion at 1k/2k Hz, degrees	180/110	167/89 Horizontal 115/104 Vertical	167/89 Horizontal 115/104 Vertical
Dimensions, LxHxP, mm	233 x 171 x 75	233 x 168 x 75	233 x 168 x 75
Colour	White RAL9016	White RAL9016	White RAL9016
Material	Plastic	Plastic	Plastic
IP-rating	21	21	21
EN 54-24 compliance	No	Yes	Yes

WWC Series



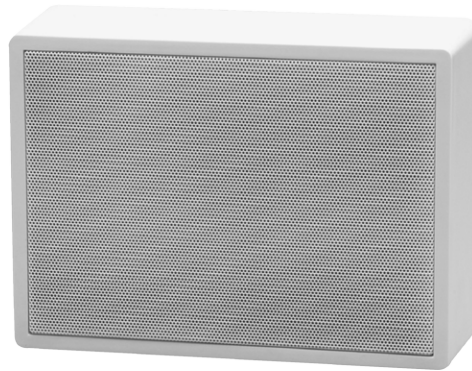
Wallmount Speakers with Wooden Housing (MDF)

FEATURES

- Exceptional acoustic quality
- High efficiency
- Compact design
- Economical
- Simple installation
- Wooden Housing (MDF)
- Capacitor for DC line monitoring (ENC version)
- Plastic terminal and without fuse (X version)
- Built-in attenuator (WWC6/TRV)

APPLICATIONS

- Schools
- Restaurants
- Reception rooms
- Museums
- Hotels
- Administrations
- Medical offices



TECHNICAL CHARACTERISTICS

	WWC 6/T	WWC 6/TRV	WWC6T/EN	WWC6T/ENC	WWC6TX/EN
Tapping 100 volts line, watts	6/3/1.5/0.75/0.25	6/3/1.5/OFF	6/3/1.5/0.75/0.25	6/3/1.5/0.75/0.25	6/3/1.5/0.75/0.25
Effective frequency range, Hz	85 - 18,500	85 - 18,500	180 - 18,500	180 - 18,500	180 - 18,500
SPL @ 1 m, 1 watt, dB	95	90	82	82	82
SPL @ 1 m, full power, dB	103	97	90	90	90
Dispersion at 1k/2k Hz, degrees	180/180		152/98 Horizontal 128/113 Vertical	152/98 Horizontal 128/113 Vertical	152/98 Horizontal 128/113 Vertical
Dimensions, L x H x P, mm	254 x 195 x 82	254 x 195 x 82	255 x 196 x 82	255 x 196 x 82	255 x 196 x 82
Colour	White RAL9016	White RAL9016	White RAL9016	White RAL9016	White RAL9016
Material	Wood	Wood	Wood	Wood	Wood
IP-rating	21	21	21	21	21
EN 54-24 compliance	No	No	Yes	Yes	Yes

WWC Series



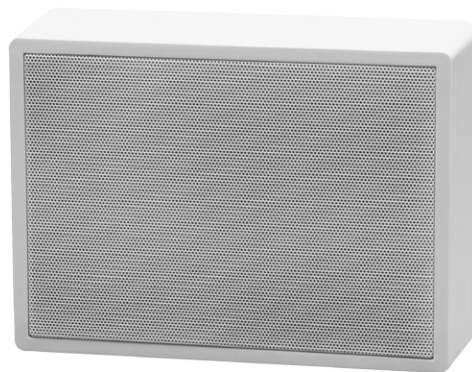
A/B Wallmount Speakers with Wooden Housing (MDF)

FEATURES

- Exceptional acoustic quality
- High efficiency
- Compact design
- Economical
- Simple installation
- Wooden Housing (MDF)
- Capacitor for DC line monitoring (ENC version)
- Plastic terminal and without fuse (X version)
- A/B line mode

APPLICATIONS

- Schools
- Restaurants
- Reception rooms
- Museums
- Hotels
- Administrations
- Medical offices



TECHNICAL CHARACTERISTICS

	WWC6TAB/EN	WWC6TABX/EN	WWC6TAB/ENC
Tapping 100 volts line, watts	2 x (6/3/1.5/0.75/0.25)	2 x (6/3/1.5/0.75/0.25)	2 x (6/3/1.5/0.75/0.25)
Effective frequency range, Hz	200 - 20,000	200 - 20,000	200 - 20,000
SPL @ 1 m, 1 watt, dB	95	95	95
SPL @ 1 m, full power, dB	103	103	103
Dispersion at 1k/2k Hz, degrees	149/100 Horizontal 104/56 Vertical	149/100 Horizontal 104/56 Vertical	149/100 Horizontal 104/56 Vertical
Dimensions, L x H x P, mm	255 x 196 x 82	255 x 196 x 82	255 x 196 x 82
Colour	White RAL9016	White RAL9016	White RAL9016
Material	Wood	Wood	Wood
IP-rating	21	21	21
EN 54-24 compliance	Yes	Yes	Yes

MWC Series

Round Wallmount Loudspeakers



FEATURES

- Excellent reproduction of speech and music
- High efficiency
- Compact design
- Economical
- Ceiling or wall installation
- Capacitor for DC line monitoring (ENC version)

APPLICATIONS

- Schools
- Restaurants
- Reception rooms
- Museums
- Hotels
- Administrations
- Medical offices



TECHNICAL CHARACTERISTICS

	MWC 6/T	MWC6T/EN	MWC6T/ENC
Tapping 100 volts line, watts	6/3/1.5/0.75/0.25	6/3/1.5/0.75/0.25	6/3/1.5/0.75/0.25
Effective frequency range, Hz	85 - 18,500	85 - 18,500	85 - 18,500
SPL @ 1 m, 1 watt, dB	94	91	91
SPL @ 1 m, full power, dB	102	99	99
Dispersion at 1k/2k Hz, degrees	180/180	174/106 Horizontal 174/108 Vertical	174/106 Horizontal 174/108 Vertical
Dimensions, L x H x P, mm	170 x 75	170 x 75	170 x 75
Colour	White RAL9016	White RAL9016	White RAL9016
Material	Steel	Steel	Steel
IP-rating	21	21	21
EN 54-24 compliance	No	Yes	Yes

APC Series

Moulded Cabinet Loudspeakers



FEATURES

- Elegant and sober design
- Ceiling or wall installation
- Made of a UV-resistant reinforced ABS plastic
- Capacitor for DC line monitoring (ENC version)
- Water and dust resistant, IP44

APPLICATIONS

- Train stations
- Schools
- Retails
- Offices



TECHNICAL CHARACTERISTICS

	APC4T/EN	APC4T/ENC
Tapping 100 volts line, watts	4/2/1/0.5	4/2/1/0.5
Effective frequency range, Hz	120 - 18,000	120 - 18,000
SPL @ 1 m, 1 watt, dB	93	93
SPL @ 1 m, full power, dB	99	99
Dispersion at 1k/2k Hz, degrees	205/162 Horizontal 221/199 Vertical	205/162 Horizontal 221/199 Vertical
Dimensions, L x H x P, mm	168 x 116 x 100	168 x 116 x 100
Colour	White RAL9016	White RAL9016
Material	Plastic	Plastic
IP-rating	44	44
EN 54-24 compliance	Yes	Yes

APC Series



Bi-Directional Moulded Cabinet Loudspeakers

FEATURES

- Elegant and sober design
- 2 built-in speakers
- Ceiling or wall installation
- Made of a UV-resistant reinforced ABS plastic
- Capacitor for DC line monitoring (ENC version)
- Water and dust resistant, IP44

APPLICATIONS

- Train stations
- Schools
- Retails
- Offices



TECHNICAL CHARACTERISTICS

	APC6BT/EN	APC6BT/ENC
Tapping 100 volts line, watts	6/3/1.5/0.75	6/3/1.5/0.75
Effective frequency range, Hz	110 - 18,000	110 - 18,000
SPL @ 1 m, 1 watt, dB	95	95
SPL @ 1 m, full power, dB	102	102
Dispersion at 1k/2k Hz, degrees	260/298 Horizontal 287/253 Vertical	260/298 Horizontal 287/253 Vertical
Dimensions, L x H x P, mm	246 x 116 x 100	246 x 116 x 100
Colour	White RAL9016	White RAL9016
Material	Plastic	Plastic
IP-rating	44	44
EN 54-24 compliance	Yes	Yes

PMC Series

Moulded Cabinet Loudspeakers



FEATURES

- Specifically designed for use in humid and corrosive rooms
- Made of a UV-resistant reinforced ABS plastic
- Water and dust resistant, IP56

APPLICATIONS

- Saunas
- SPA
- Aquatic centers
- Boats
- Cloakrooms



TECHNICAL CHARACTERISTICS

	PMC 4/T	PMC4T/EN	PMC4T/ENC
Tapping 100 volts line, watts	4/2/1/0.5	4/2/1/0.5	4/2/1/0.5
Effective frequency range, Hz	220 - 11,000	220 - 11,000	220 - 11,000
SPL @ 1 m, 1 watt, dB	91	92	92
SPL @ 1 m, full power, dB	97	98	98
Dispersion at 1k/2k Hz, degrees	180/110	181/105 Horizontal 197/115 Vertical	181/105 Horizontal 197/115 Vertical
Dimensions, L x H x P, mm	119 x 119 x 67.5	119 x 119 x 67.5	
Colour	White RAL9016	White RAL9016	White RAL9016
Material	Plastic	Plastic	Plastic
IP-rating	56	56	56
EN 54-24 compliance	No	Yes	Yes

SENTRY Series



Vandalproof Metal Cabinet Loudspeakers

FEATURES

- Anti-vandal protected metal housing
- Square form
- Ceiling or wall installation
- Water and dust resistant, IP52
- Capacitor for DC line monitoring (ENC version)
- A/B line (AB version)

APPLICATIONS

- Train stations
- Subway stations
- Car parks



TECHNICAL CHARACTERISTICS

	SENTRY 6/STC	SENTRY6ST/EN	SENTRY6ST/ENC	SENTRY 6STC/AB	SENTRY6STAB/EN
Tapping 100 volts line, watts	6/3/1.5/0.75	6/3/1.5/0.75/0.25	6/3/1.5/0.75/0.25	2 x (6/3/1.5/0.75/0.25)	2 x (6/3/1.5/0.75/0.25)
Effective frequency range, Hz	180 - 18,000	180 - 18,000	180 - 18,000	220 - 16,500	200 - 20,000
SPL @ 1 m, 1 watt, dB	93	95	95	86	95
SPL @ 1 m, full power, dB	99	103	103	92	103
Dispersion at 1k/2k Hz, degrees	170/120	81/101 Horizontal 108/108 Vertical	81/101 Horizontal 108/108 Vertical	140/180	81/101 Horizontal 108/108 Vertical
Dimensions, L x H x P, mm	190 x 190 x 75	190 x 190 x 75	190 x 190 x 75	190 x 190 x 75	190 x 190 x 75
Colour	White RAL9016	White RAL9016	White RAL9016	White RAL9016	White RAL9016
Material	Steel	Steel	Steel	Steel	Steel
IP-rating		52	52		
EN 54-24 compliance	No	Yes	Yes	No	Yes

SENTRY Series



Vandalproof Metal Cabinet Loudspeakers

FEATURES

- Anti-vandal protected metal housing
- Round form
- Ceiling or wall installation
- Water and dust resistant, IP52
- Capacitor for DC line monitoring (ENC version)

APPLICATIONS

- Train stations
- Car parks
- Subway stations



TECHNICAL CHARACTERISTICS

	SENTRY 6/RTC	SENTRY6RT/EN	SENTRY6RT/ENC
Tapping 100 volts line, watts	6/3/1.5/0.75/0.25	6/3/1.5/0.75/0.25	6/3/1.5/0.75/0.25
Effective frequency range, Hz	250 - 18,000	250 - 18,000	250 - 18,000
SPL @ 1 m, 1 watt, dB	90	95	95
SPL @ 1 m, full power, dB	97	102	102
Dispersion at 1k/2k Hz, degrees	140/110	119/100 Horizontal 77/99 Vertical	119/100 Horizontal 77/99 Vertical
Dimensions, front and depth, mm	194 x 75	194 x 75	194 x 75
Colour	White RAL9016	White RAL9016	White RAL9016
Material	Steel	Steel	Steel
IP-rating		52	52
EN 54-24 compliance	No	Yes	Yes

GB Series

Metal and Plastic Spherical Loudspeakers

FEATURES

- Excellent reproduction of speech and music
- Wide sound coverage
- Elegant and sober design
- Economical
- Made of a UV-resistant reinforced ABS plastic (plastic version)
- Capacitor for DC line monitoring (ENC version)
- 5 strand braided cable provided with the GB10/T and GB20/T (no cable provided with other models)

APPLICATIONS

- Airports
- Shopping malls
- Sales areas
- Warehouses
- Factories



GB 10/T



GB15T/EN



GB20T/EN

TECHNICAL CHARACTERISTICS

	GB 10/T	GB15T/EN	GB15T/ENC	GB 20/T	GB20T/EN	GB20T/ENC
Tapping 100 volts line, watts	6/3/1.7/0.75	15/7.5/3.75/1.875	15/7.5/3.75/1.875	20/10/5/2.5	20/10/5/2.5	20/10/5/2.5
Effective frequency range, Hz	220 - 18,000	180 - 20,000	180 - 20,000	80 - 18,000	80 - 18,000	80 - 18,000
SPL @ 1 m, 1 watt, dB	92	92	92	94	97	97
SPL @ 1 m, full power, dB	99	103	103	107	110	110
Dispersion at 1k/2k Hz, degrees	360/360 Horizontal 180/160 Vertical	83/38 Horizontal 82/39 Vertical	83/38 Horizontal 82/39 Vertical	360/360 Horizontal 160/140 Vertical	82/37 Horizontal 90/35 Vertical	82/37 Horizontal 90/35 Vertical
Dimensions, mm	181	182	182	254	254	254
Colour	White RAL9016	White RAL9016	White RAL9016	White RAL9016	White RAL9016	White RAL9016
Material	Metal	Plastic	Plastic	Plastic	Plastic	Plastic
IP-rating		33	33		33	33
EN 54-24 compliance	No	Yes	Yes	No	Yes	Yes

JD Series

Music Cabinet Loudspeakers

FEATURES

- Excellent reproduction of music
- Compact design
- Available for 2 kinds of colour (black and white)
- Die-cast aluminium swivel bracket

APPLICATIONS

- Retails
- Hotels
- Waiting rooms
- Administrations
- Bars
- Leisure centers



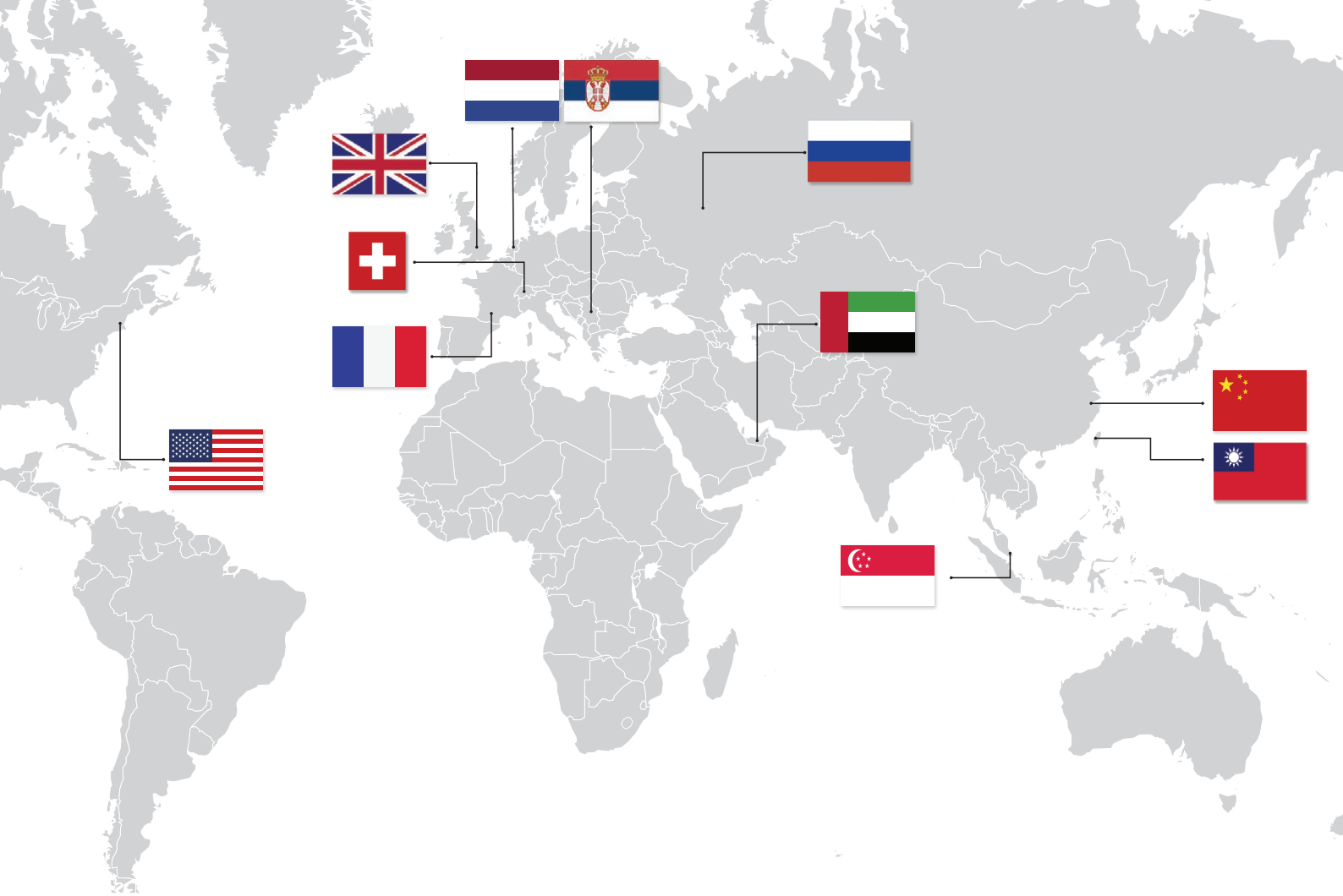
TECHNICAL CHARACTERISTICS

	JD 20/TB	JD 20/TW
Tapping 100 volts line, watts	20/10/5/2.5	20/10/5/2.5
Effective frequency range, Hz	63 - 20,000	63 - 20,000
SPL @ 1 m, 1 watt, dB	84	84
SPL @ 1 m, full power, dB	97	97
Dispersion at 1k/2k Hz, degrees	180/100	180/100
Dimensions, front and depth, mm	146 x 229 x 150	146 x 229 x 150
Colour	Black	White
Material	Plastic	Plastic
IP-rating		
EN 54-24 compliance	No	No



NOTES

Lined area for taking notes, consisting of multiple horizontal lines.



ATEIS Europe B.V.
Europe & Africa
Celsiusstraat 1 - 2652 XN Lansingerland
(Rotterdam Region), Netherlands
Tel: +31 (0)10 2088690
info@ateis-europe.com



ATEIS Suisse SA
Avenue des Baumettes 9, 1020 Renens VD,
Switzerland
Tel: +41 (0)218812510
info@ateis.ch



ATEIS France
8, rue de l'Europe - ZA de Font Ratel,
38640 Claix, France
Tel: +33 (0)4 76992630
contact@ateis.com



ATEIS SE Europe
Sime Lukina Lazića 12-B, 11040 Belgrade
Serbia
Tel: +381 (0)11 40 89 617
info@ateisseurope.com

