



Public Address - Voice Alarm
Audio Distribution over IP
Commercial Audio
Intelligent Acoustic Solutions
Intercommunication
Loudspeakers



CATALOGUE 2012

Closed Cabinet Speakers-II

DELIVERING YOUR MESSAGE

Public Address - Voice Alarm

Audio Distribution over IP

Commercial Audio

Intelligent Acoustic Solutions

Intercommunication

Loudspeakers



SENTRY6/STC

Vandal Proof Metal



JD Series

This range of stylish Music Cabinet Loudspeakers benefit from a 2-way enclosure, a custom loaded midrange/Bass and a polypropylene coned drive unit. These have been paired with a high performance neodymium tweeter to accurately reproduce the high frequencies. Both drive units are matched with a passive crossover to ensure a smooth performance over the operating bandwidth.

Designed for use in shops, clubs, themed environments, wine bars etc., these units provide a high quality performance from a compact and attractive enclosure.

Available in 20 Watt and 40 Watt, black or white, 100 Volt line or 16 ohm versions, these units are supplied complete with a universal mounting bracket which has a unique locking facility allowing mounting on the wall or ceiling with ease.

The 100 Volt Line version, has a variable tapping selection switch accessible from the front of the cabinet and can be adapted to comply with British and European Standards for voice alarm systems.

SENTRY Series

The **SENTRY** range of vandal proof metal cabinet loudspeakers is constructed from epoxy coated high grade steel and can be installed on solid ceilings or walls.

In compliance with BS5839 part 8, the SENTRY series incorporates a ceramic terminal and thermal fuse and is, therefore, suitable for voice alarm applications.

Supplied with dual gland entries, which give the installer the option of loop in loop out termination thus avoiding the need for a separate junction box, these cabinets are both robust and aesthetically pleasing.

Although our standard finish is White, RAL9016, alternative finishes are available upon request.

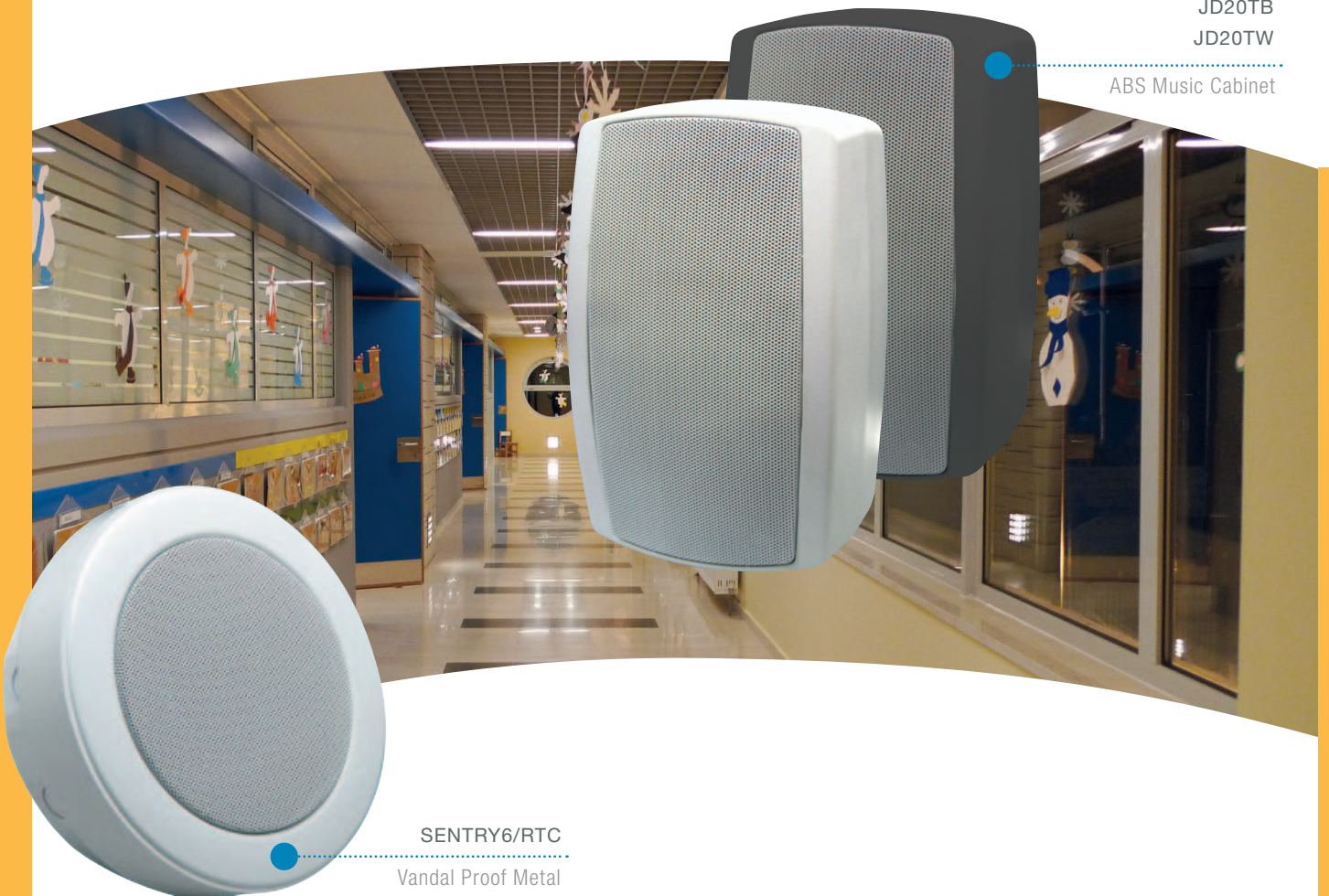
The SENTRY6/STC contains dual cone loudspeakers offering a wide frequency range suitable for both speech and music applications.

Closed Cabinet Speakers-II

JD20TB

JD20TW

ABS Music Cabinet



SENTRY6/RTC

Vandal Proof Metal

Closed Cabinet Speakers-II

Music Cabinet Speakers

JD Series 4

Vandal Proof Metal Cabinet

SENTRY Series 8

JD20TB

Music Cabinet Speakers

ELECTRICAL

Rated power, Watts:	20
Tappings 100 volt line, Watts:	20/10/5/2.5
Transformer Impedance, Ohms, 100V:	500/1k/2k/4k
Tappings 70.7 volt line, Watts:	10/5/1.25/0.75
Driver impedance, Ohms:	16
Effective frequency range, Hz (BSEN60268-5):	63 - 20kHz
S.P.L. @ 1m, 1 watt, dB, Test Signal Bandwidth 100 Hz-10 kHz:	84
S.P.L. @ Full power Octave Bandwidth, dB:	97
Acoustic Power (dB-PWL@1 watt) 100 Hz-10 kHz, dB:	78/75
Dispersion at 1k/2k Hz, Degrees :	180/100
Directivity Axial Q factor, 1k/2kHz:	3.5 /7.1

MECHANICAL

Dimensions, Front and depth, mm:	146 x 229 x 150
Net Weight, Kgs:	1.9
Colour (Unless Specified) :	RAL9017
Material:	ABS Moulded housing
Mounting:	Die-cast Aluminium swivel bracket



JD20TB

This range of stylish Music Cabinet Loudspeakers benefit from a 2-way enclosure, a custom loaded midrange/Bass and a polypropylene coned drive unit. These have been paired with a high performance neodymium tweeter to accurately reproduce the high frequencies. Both drive units are matched with a passive crossover to ensure a smooth performance over the operating bandwidth.

Designed for use in shops, clubs, themed environments, wine bars etc., these units provide a high quality performance from a compact and attractive enclosure.

Available in 20 Watt and 40 Watt, black or white, 100 Volt line or 16 ohm versions, these units are supplied complete with a universal mounting bracket which has a unique locking facility allowing mounting on the wall or ceiling with ease.

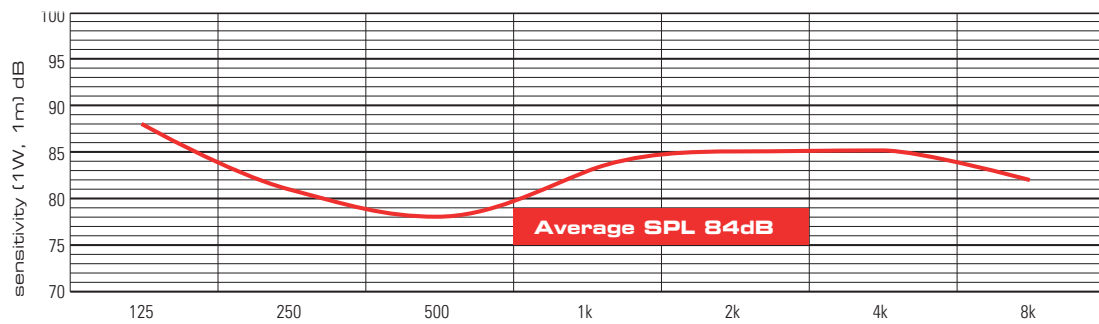
The 100 Volt Line version, has a variable tapping selection switch accessible from the front of the cabinet and can be adapted to comply with British and European Standards for voice alarm systems.

Closed Cabinet Speakers-II

JD Series

JD20TB

Speech octave band sensitivity



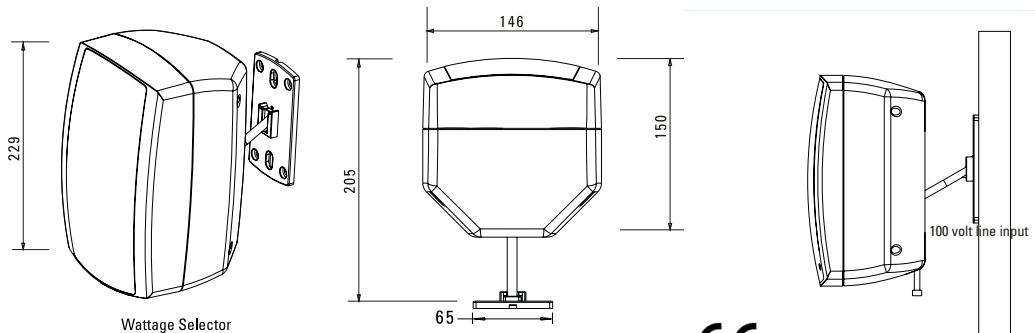
Effective Frequency Range - 63 Hz - 20 kHz

unit : mm

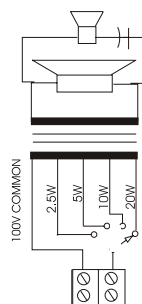
Perspective view

Top view

Side view



Circuit diagram



JD20TW

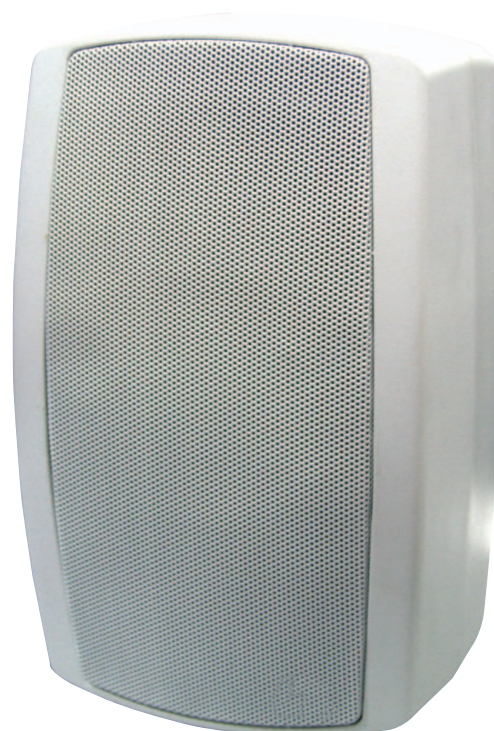
Music Cabinet Speakers

ELECTRICAL

Rated power, Watts:	20
Tappings 100 volt line, Watts:	20/10/5/2.5
Transformer Impedance, Ohms, 100V:	500/1k/2k/4k
Tappings 70.7 volt line, Watts:	10/5/1.25/0.75
Driver impedance, Ohms:	16
Effective frequency range, Hz (BSEN60268-5):	63 - 20KHz
S.P.L. @ 1m, 1 watt, dB, Test Signal Bandwidth 100 Hz-10 kHz:	84
S.P.L. @ Full power Octave Bandwidth, dB:	97
Acoustic Power (dB-PWL@1 watt) 100 Hz-10 kHz, dB:	78/75
Dispersion at 1k/2k Hz, Degrees :	180/100
Directivity Axial Q factor, 1k/2kHz:	3.5 /7.1

MECHANICAL

Dimensions, Front and depth, mm:	146 x 229 x 150
Net Weight, Kgs:	1.9
Colour (Unless Specified) :	RAL9016
Material:	ABS Moulded housing
Mounting:	Die-cast Aluminium swivel bracket



JD20TW

This range of stylish Music Cabinet Loudspeakers benefit from a 2-way enclosure, a custom loaded midrange/Bass and a polypropylene coned drive unit. These have been paired with a high performance neodymium tweeter to accurately reproduce the high frequencies. Both drive units are matched with a passive crossover to ensure a smooth performance over the operating bandwidth.

Designed for use in shops, clubs, themed environments, wine bars etc., these units provide a high quality performance from a compact and attractive enclosure.

Available in 20 Watt and 40 Watt, black or white, 100 Volt line or 16 ohm versions, these units are supplied complete with a universal mounting bracket which has a unique locking facility allowing mounting on the wall or ceiling with ease.

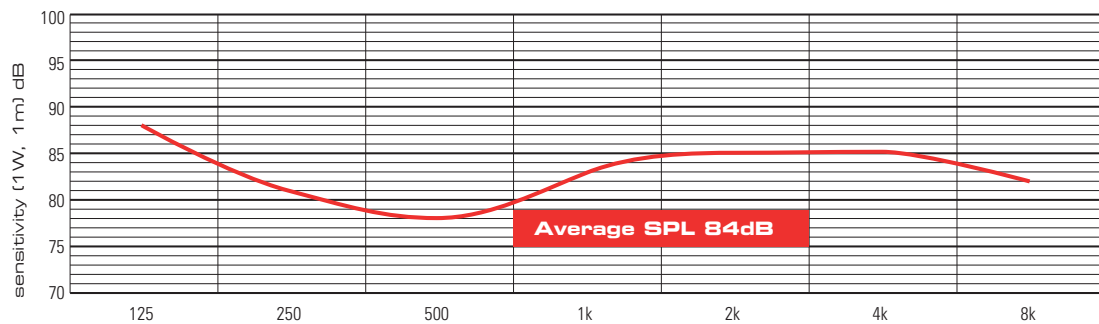
The 100 Volt Line version, has a variable tapping selection switch accessible from the front of the cabinet and can be adapted to comply with British and European Standards for voice alarm systems.

Closed Cabinet Speakers-II

JD Series

JD20TW

Speech octave band sensitivity



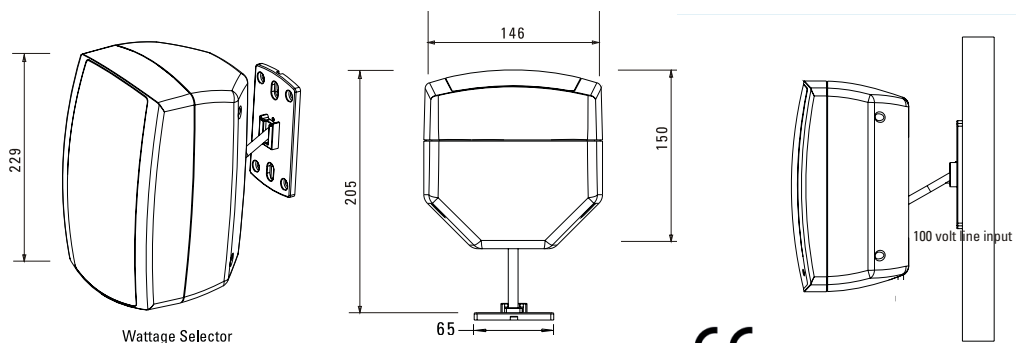
Effective Frequency Range - 63 Hz - 20 kHz

unit : mm

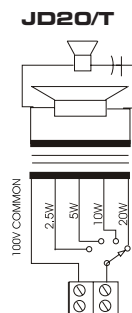
Perspective view

Top view

Side view



Circuit diagram



SENTRY6/RTC

Vandal Proof Metal Cabinet

ELECTRICAL

Rated power, Watts:	6
Tappings 100 volt line, Watts:	6/3/1.5/0.75/0.25
Transformer Impedance, Ohms, 100V:	1.67k/3.33k/6.66k/13.3k/40k
Tappings 70.7 volt line, Watts:	3/1.5/0.75/0.375/0.125
Driver impedance, Ohms:	8
Effective frequency range, Hz (BS EN60268-5):	250 – 18,000
S.P.L. @ 1m, 1 watt, dB, Test Signal Bandwidth 100 Hz-10 kHz:	90
S.P.L. @ Full power Octave Bandwidth, dB:	97
Acoustic Power (dB-PWL@1 watt) 1k/2kHz, dB:	87/87
Dispersion at 1k/2k Hz, Degrees :	140/110
Directivity Axial Q factor, 1k/2kHz:	4.6 /6.7

MECHANICAL

Dimensions, Front and depth, mm:	194 x 75
Net Weight, Kgs:	1.5
Colour (Unless Specified):	White RAL9016
Material:	Steel front, Die cast back box
Mounting:	Screw



SENTRY6/RTC

The SENTRY range of vandal proof metal cabinet loudspeakers is constructed from epoxy coated high grade steel and can be installed on solid ceilings or walls.

In compliance with BS5839 part 8, the SENTRY6/RTC incorporates a ceramic terminal and thermal fuse and is, therefore, suitable for voice alarm applications.

Supplied with dual gland entries, which give the installer the option of loop in loop out termination thus avoiding the need for a separate junction box, these cabinets are both robust and aesthetically pleasing.

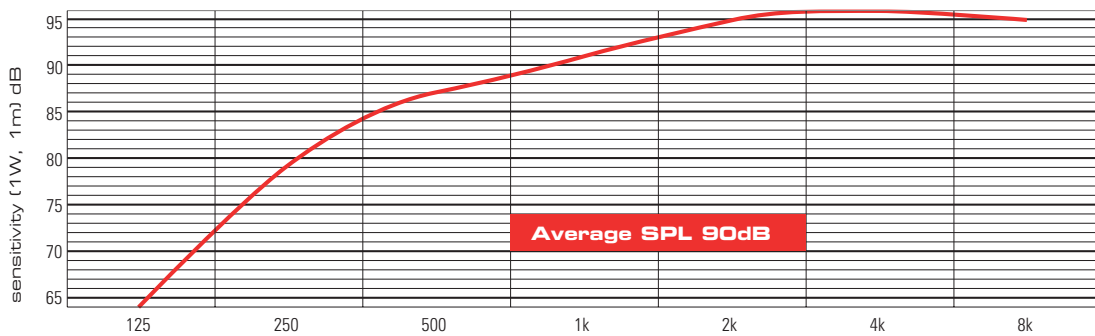
Although our standard finish is White, RAL9016, alternative finishes are available upon request.

Closed Cabinet Speakers-II

SENTRY Series

SENTRY6/RTC

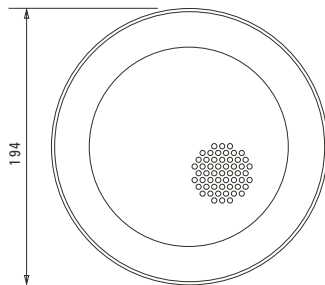
Speech octave band sensitivity



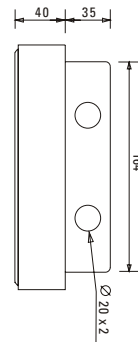
Effective Frequency Range - 250 Hz - 18 kHz

unit : mm

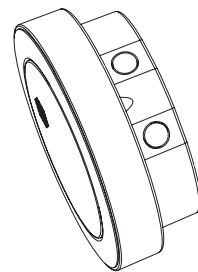
Front view



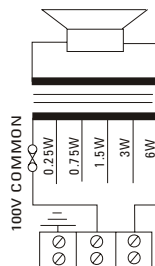
Side view



Perspective view



Circuit diagram



BS5839-8

SENTRY6/STC

Vandal Proof Metal Cabinet

ELECTRICAL

Rated power, Watts:	6
Tappings 100 volt line, Watts:	6/3/1.5/0.75
Transformer Impedance, Ohms, 100V:	1.67k/3.33k/6.66k/13.3k
Tappings 70.7 volt line, Watts:	3/1.5/0.75/0.375
Driver impedance, Ohms:	8
Effective frequency range, Hz (BS EN60268-5):	180 – 18,000
S.P.L. @ 1m, 1 watt, dB, Test Signal Bandwidth 100 Hz-10 kHz:	93
S.P.L. @ Full power Octave Bandwidth, dB:	99
Acoustic Power (dB-PWL@1 watt) 1k/2kHz, dB:	89/89
Dispersion at 1k/2k Hz, Degrees :	170/120
Directivity Axial Q factor, 1k/2kHz:	4.8 /6.3

MECHANICAL

Dimensions, Front and depth, mm:	190 x 190 x 75
Net Weight, Kgs:	1.8
Colour (Unless Specified):	White RAL9016
Material:	Steel front, Die cast back box
Mounting:	Screw



RCS5T

The SENTRY range of vandal proof metal cabinet loudspeakers is constructed from epoxy coated high grade steel and can be installed on solid ceilings or walls.

The SENTRY6/STC contains dual cone loudspeakers offering a wide frequency range suitable for both speech and music applications.

Supplied with dual gland entries, which give the installer the option of loop in loop out termination thus avoiding the need for a separate junction box, these cabinets are both robust and aesthetically pleasing.

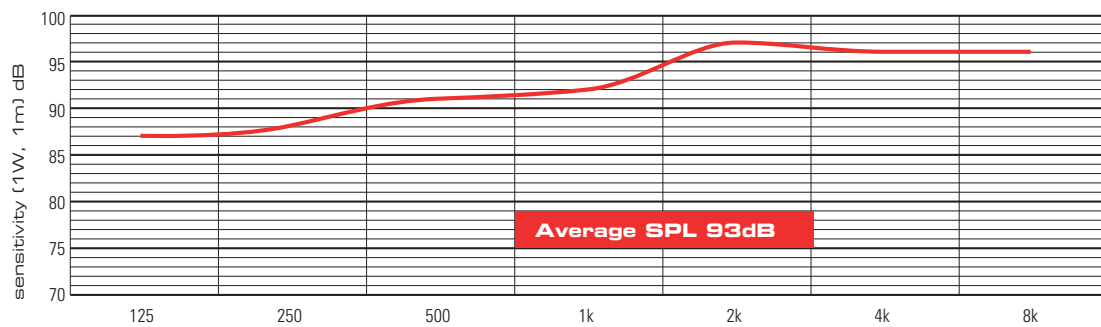
Although our standard finish is White, RAL9016, alternative finishes are available upon request.

Closed Cabinet Speakers-II

SENTRY Series

SENTRY6/STC

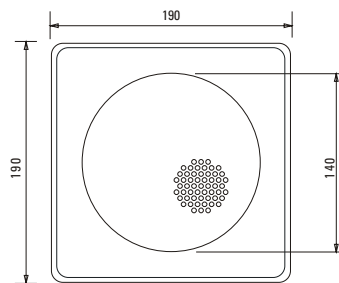
Speech octave band sensitivity



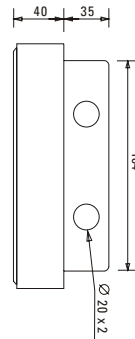
Effective Frequency Range - 80 Hz - 18 kHz

unit : mm

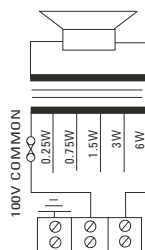
Front view



Side view



Circuit diagram



BS5839-8

Public Address - Voice Alarm
Audio Distribution over IP
Commercial Audio
Intelligent Acoustic Solutions
Intercommunication
Loudspeakers



ATEIS Europe B.V.

Sydneystraat 42 - 3047 BP - ROTTERDAM - NETHERLANDS

Phone +31 (0)10 2088690 - Fax +31 (0)10 2088699

www.ateis-europe.com

info@ateis-europe.com

DELIVERING YOUR MESSAGE