



Public Address - Voice Alarm

Audio Distribution over IP

Commercial Audio

Loudspeakers



# IDA8

Highly Integrated Network PA/VA System

DELIVERING YOUR MESSAGE

ATEİS proudly introduces a highly integrated PA/VA system which is complied with EN54-16 and UL60065 requirements. The system features emergency messaging, paging, audio streaming, priority control, VoIP, 3rd party control, message playing & recording etc..

The IDA8 system is a fully digital and networked PA/VA system with adjustable DSP parameters within the digital domain. The IDA8C controller consists of 2 modular I/O card-slot with 8 in, 8 out, 4 in x 4 out for the use in any installation size, whether is a small local system of 256 zones or a big complex multi-zone and multi-input system of 8,192 zones. All these functions are presented within the main matrix to ensure high quality of audio production required at different ambient environment and large sites.

IDA8C controller supports up to 48 simultaneous audio channels per local network, and is equipped with four remote ports for paging consoles, nine monitored EVAC inputs, eight contact outputs, a fault & a EVAC relay output, and is capable of connecting up to eight monitored amplifiers and two backup amplifiers. Each speaker line is with A/B zone line detection according to BS 5839 part 8. In addition, the IDA8C is capable to monitor and log the status of all the device components in the system.

The ATEİS local & global network supports redundant loop cabling, back-up amplifier switching/sharing, system unit back-up redundancy in case of the controller or amplifier breaks down. All these features provide the most high level of full-redundancy and offers a complete real-time monitoring to ensure a secured installation. Ethernet communications shall be utilized for software control, configuration and audio distribution.

The system supports flexible use of network cards - CAT5/6 -100m or fiber-optic (multi mode-2 km and single mode-20 km). Each system application shall feature a fully redundant network configuration with less than 0.02 ms latency between units.

## PROCESSORS & SLAVE UNITS



**IDA8C**  
Networkable Controller  
Matrix Mode



**IDA8SL**  
Networkable Lo-Z Slave Unit  
Matrix Mode



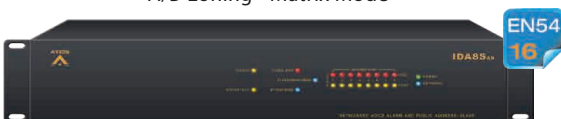
**IDA8S**  
Networkable Slave Unit  
Matrix Mode



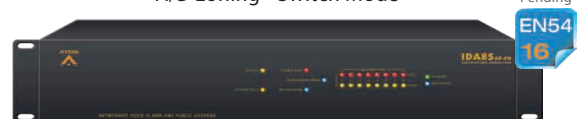
**IDA8C-SW**  
Networkable Controller  
Switch Mode



**IDA8SAB**  
Networkable Slave Unit  
A/B-zoning - Matrix Mode



**IDA8SAB-SW**  
Networkable Slave Unit  
A/B-zoning - Switch Mode



PAGING CONSOLES & ACCESSORIES

**PSS-AS**  
Colour Touch Screen  
Paging Console



**PPM-AS**  
Desktop  
Paging Console



**CD-TOUCHAS**  
Wall-Mount  
Touch Screen Paging Console



**CD-8AS/CD-16AS**  
Wall-Mount  
8/16 Buttons Paging Console



**URC-150AS** Programmable Remote Controller  
**URC-200AS** Programmable Remote Controller (Ethernet)



**DNM-485** Noise Sensing Microphone (RS485)  
**DNM-ENET** Noise Sensing Microphone (Ethernet)



**DIALER-DP** Wired Touch Dialpad  
**DIALER-DPWL** Wireless Dialpad with Transceiver



AMPLIFIERS & BATTERY CHARGERS



**SPA SPA2060/SPA2120/SPA2240**  
Security Power Amplifier, 24VDC Backup



**SONAES**  
Charger and Monitored Unit



**BPA-1240**  
Bridging Power Amplifier ClassAB 240W x 1CH



**DPA8060**  
60W x 8 Digital Power Amplifier



**BCU-4830A**  
Advanced Monitored Battery Charger  
3amp/30amp

**BPA-1480**  
Bridging Power Amplifier ClassAB 480W x 1CH

**DPA4125**  
125W x 4 Digital Power Amplifier

**BCU-4875A**  
Advanced Monitored Battery Charger  
6amp/75amp

**BPA-2060**  
Bridging Power Amplifier ClassAB 60W x 2CH

**DPA4250**  
250W x 4 Digital Power Amplifier

**BPA-2120**  
Bridging Power Amplifier ClassAB 120W x 2CH

**DPA2500**  
500W x 2 Digital Power Amplifier

**BPA-2240**  
Bridging Power Amplifier ClassAB 240W x 2CH

**BPA-2480**  
Bridging Power Amplifier ClassAB 480W x 2CH

**BPA-1000**  
Bridging Power Amplifier ClassAB 1000W x 1CH

### REDUNDANCY SWITCHING UNITS



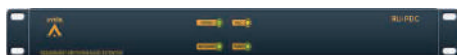
#### RU-MAIN

Switching unit for digital audio processing with paging console interface



#### RU-CTL

Switching unit for secured input and normal contact output

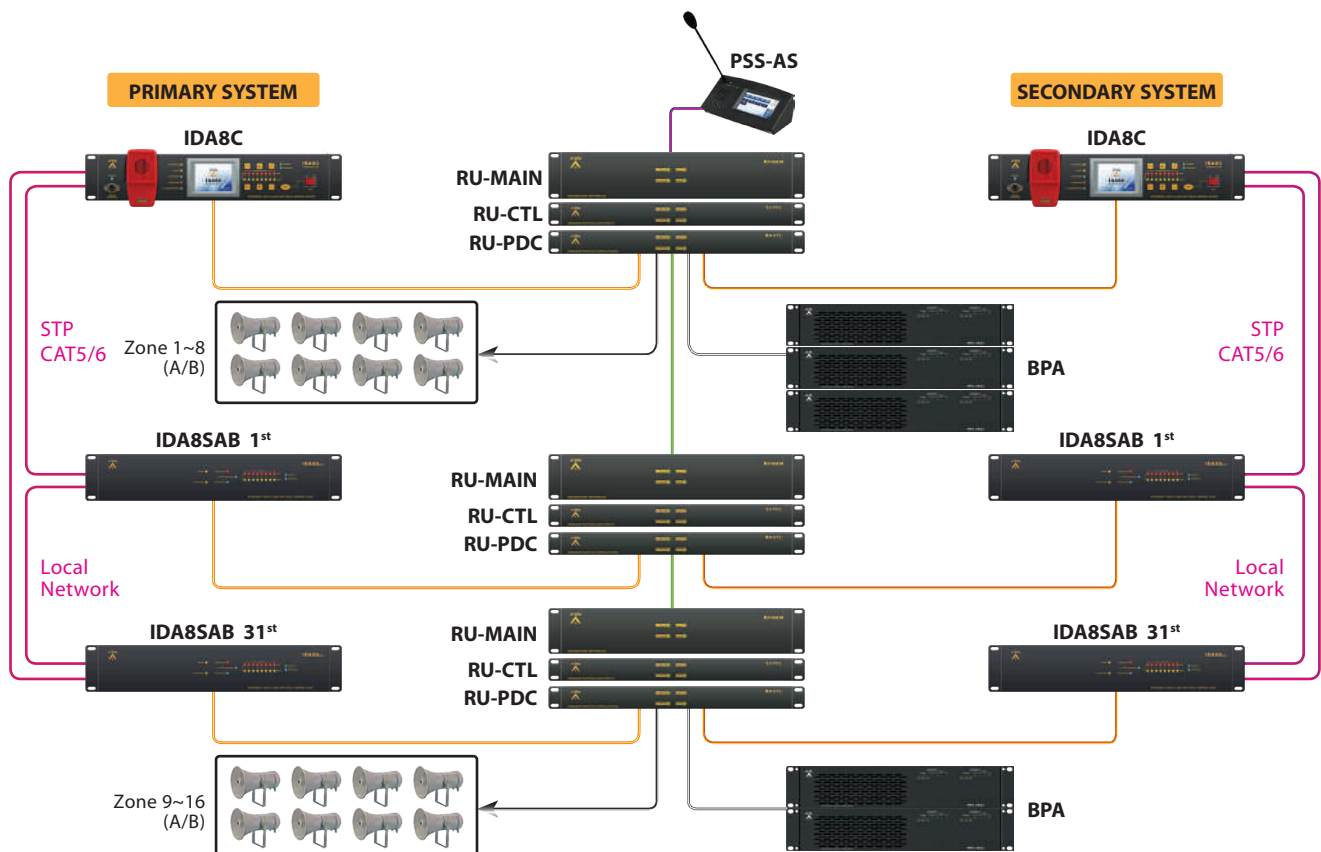


#### RU-PDC

Switching unit with in/out contacts, paging console & telephone line interface

The IDA8 RU series are designed to provide the reliability of high level of full-redundancy and offer a complete real-time monitoring. The RU-MAIN is in charge of auto switching to primary/secondary devices and re-operate for IDA8C controller and IDA8SAB slave units.

### FULL-REDUNDANCY CONFIGURATION



Full support for 100% redundancy and use of watchdog services guarantees the maximum system availability with immediate switchover of primary to secondary not only by means of active spare amplifiers but also the control equipment. Should any main equipment fails, there's an automatic switchover to the redundant system to ensure uninterrupted operation.



ATEIS STUDIO



**INTEGRATED OPERATION SOFTWARE**

ATEIS Studio software is a graphic user interface designed for intuitive system setup and programming. The PC-based software allows hardware updating, full system configuration including flexible device topology, DSP adjustments, events, schedulers, presets control and real-time monitoring.

**GRAPHICAL USER INTERFACE**

ATEIS Studio allows complete PA/VA or audio systems incorporating a range of devices to be configured, monitored and controlled centrally from a single user interface. ATEIS Studio supports all IP-based products within the ATEIS product family such as IDA8 PA/VA system, LAP-G2T and ECS audio system. The software enables a comprehensive overview of the system and its virtual connections and also offers control and device configuration for IDA8 controllers and slave units, paging consoles and remotes such as PSS-AS, CD-16AS and URC-150AS devices.

**DIAGNOSING**

ATEIS Studio monitors, controls, logs and reports a range of events. The whole system configuration preset can be stored and reloaded at the press of a button. Users can tailor design the elements of the graphic user interface or control panels, as well as program the schedulers and events and create different user levels for security and management.

**BUILDING**

ATEIS Studio provides a complete set of tools and building blocks for real-time control and monitoring. Detailed information such as signal levels, loudspeaker impedance, pre-recorded messages, amplifier conditions and other parameters can be monitored in real-time.

A comprehensive library of tools, control and monitoring elements is provided along with the GUI, including items such as volume control faders, metering, high-level EQ, compression, limiting, auto-gain, noise sensing, mixing, shortcut buttons and display elements. Element behavior can be fully tailored to suit each application. Built-in file transfer software transfers both data and audio files from the PC to the network controller.

**ACCESS LEVELS**

Additional security can be added to the software with password-protected layers according to EN54-16. Multiple users can be created and assigned, each with a unique password and access to specific layers of the GUI.

**DRAG & DROP**

To design the system configuration including hardware connection, signal paths for each device, DSP components etc., simply Drag & Drop and items/components into the design window, providing easy-to-use and real-time modification.

**FEATURES**

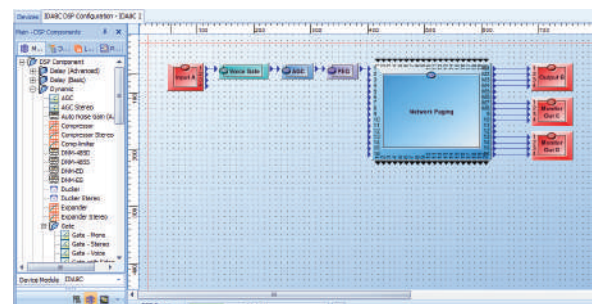
- Runs on Windows
- Assignable access levels with rights management
- All system and unit parameters can be configured
- Easy navigation
- Drag & drop features
- Real-time monitored

**DIAGNOSTIC AND LOGGING SOFTWARE**

- Call, fault and general event logging
- On-line logging function
- Historical logging
- Event display priority can be changed
- Password-protected

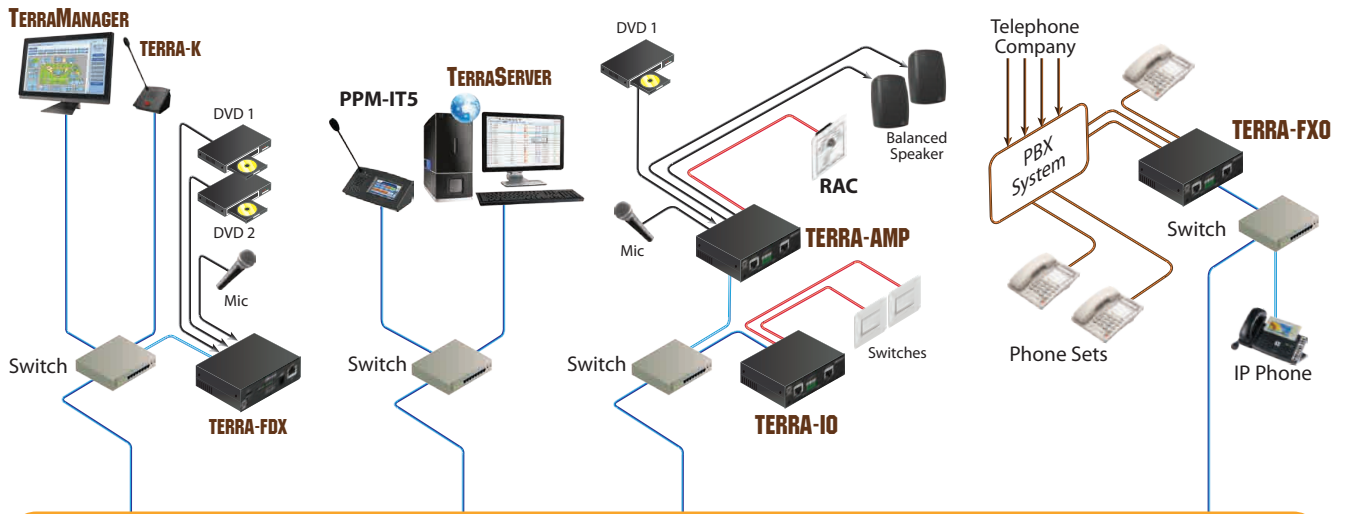
**FILE TRANSFER SOFTWARE**

- PC-based application
- Supplied together with the network controller
- Creation of message sets
- Off-line configuration

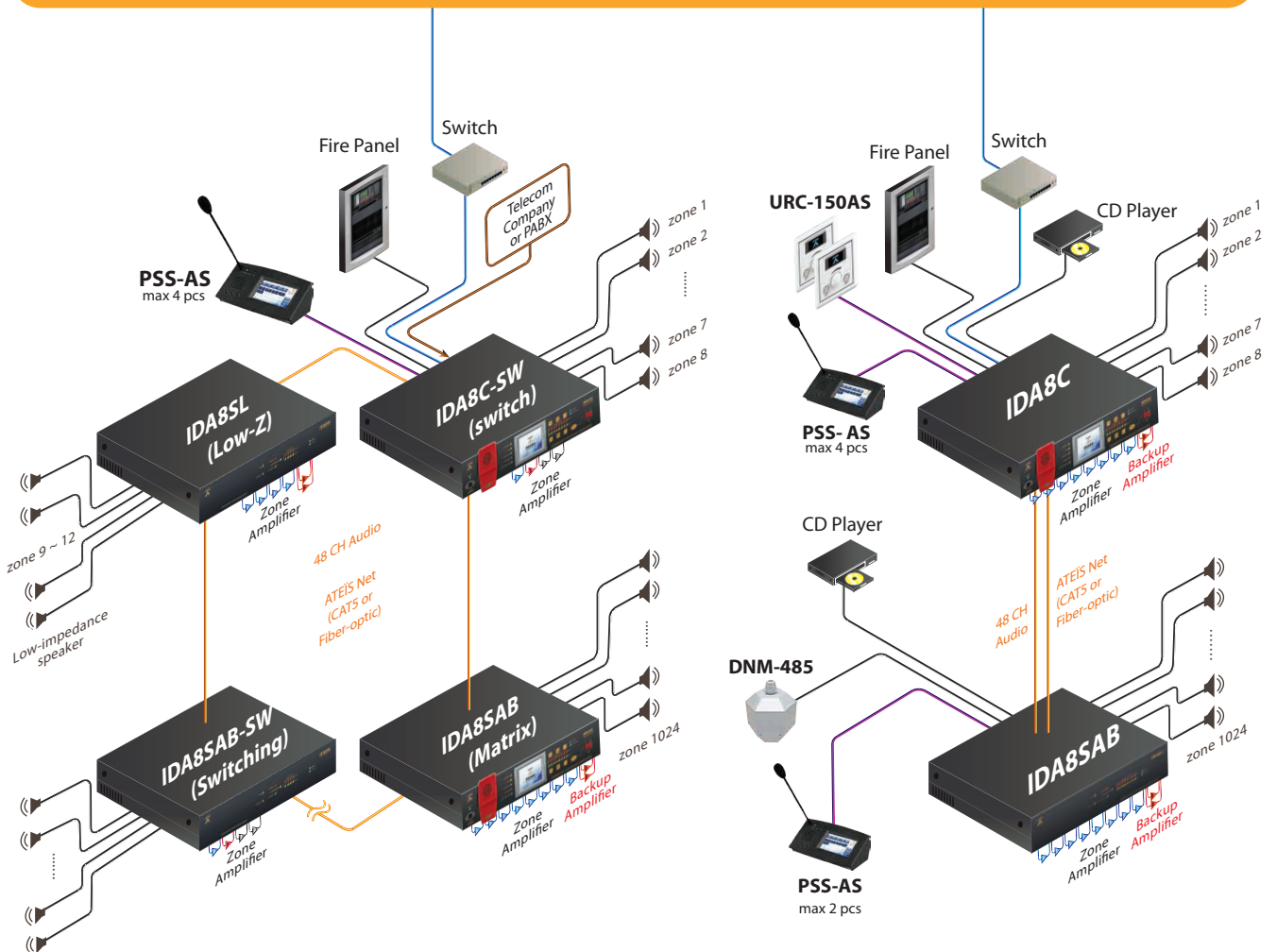




### SYSTEM DIAGRAM



**IP Network over Ethernet & Internet (64K bits per call or 128 bits per stream)**





PROJECT REFERENCES

**FRANCE**

- Rolland Garros stadium, Paris
- Air France Roissy Headquarter, Paris
- Stade de France, Paris
- St Exupery Airport, Lyon
- Department Hall, Marseille
- Pharo Cultural Center, Marseille
- Communal Headquarter, Marseille
- Borely Hippodrome, Marseille
- Congress Hall, Dijon
- Beaubourg Museum, Paris
- Nice Cote Sud Airport, Nice
- Bir Hakeim Station Subway, Paris
- Gennevilliers Station Subway, Paris
- Lyon Part Dieu Railway Station, Lyon
- Paris Nord Railway Station, Paris
- Opéra Bastille, Paris
- Futuroscope, Poitiers
- Merignac Airport, Bordeaux

**GERMANY**

- U-Bahn Nürnberg Railway
- Frankfurt Airport
- Signal Iduna Park Stadium
- Dortmund Stadium

**MIDDLE EAST**

- The Burj Al Arab Hotel, Dubai
- Jumeirah Beach Hotel, Dubai
- Capital Plaza, Dubai
- Business Bay, Dubai
- Dubai Metro
- Marsa Plaza, Dubai
- Festival City Mall, Dubai

**NETHERLANDS**

- Central Railway Station, Amsterdam
- The Hague Central Station
- Randstad Railway
- Jaarbeurs Exhibition Center
- Randstad Railway, Central-Western Netherlands
- Offshore Oil & Gas Platforms

**SWITZERLAND**

- Railway Station, Zürich
- Palexpo, Geneva
- Zürich Airport

**UK**

- City Airport, London
- Kings Cross Station, London
- Brit Oval Stadium, South London
- Falmer Stadium, Brighton
- Liverpool Cathedral
- St Pancras Railway Station
- Reading Station
- Heathrow Express
- ExCel Exhibition Centre, London
- Eden Project, Cornwall

**USA**

- U.S. Government and Military
- U.S. Department of State, Washington, DC
- U.S. Department of Energy, Washington, DC
- U.S. Department of Labor, GA
- U.S. Army Fort Hood, TX
- U.S. Army Airborne School, Fort Benning, GA
- Vandenberg Air Force Base, Lompoc, CA
- Otis Air National Guard Base, MA
- Southeast Louisiana Veterans Health Care System, New Orleans, LA
- Bay Area Rapid Transit (BART), Northern CA

APPLICATIONS



**U.S. GOVERNMENT**



**U.S. ARMY FORT HOOD**



**DUBAI METRO**



**ZÜRICH RAILWAY STATION**



**U.S. DEPARTMENT OF STATE**



**STADE DE FRANCE PARIS**



**BURJ AL ARAB HOTEL DUBAI**



**SIGNAL IDUNA PARK GERMANY**



**U.S. ARMY FT. BENNING**



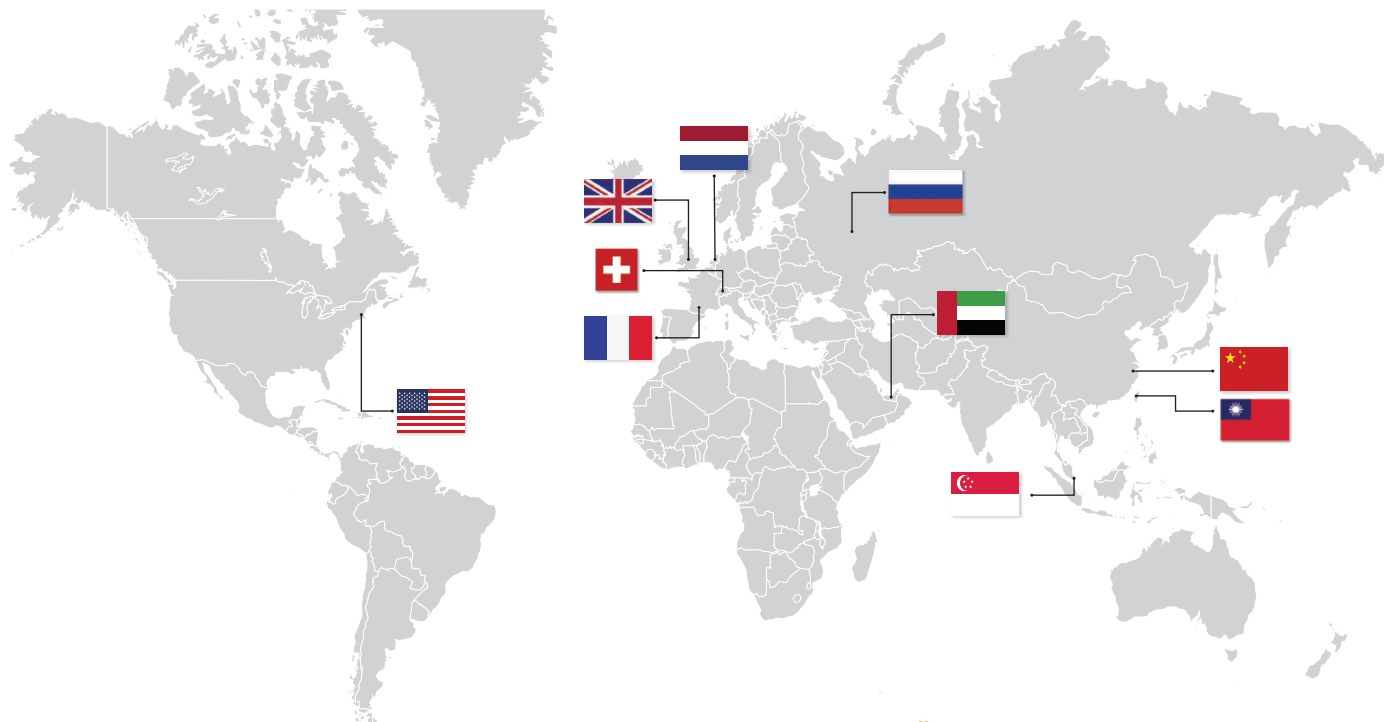
**EUROPEAN PARLIAMENT BELGIUM**



**CENTRAL STATION AMSTERDAM**



**HEATHROW AIRPORT LONDON**



**FIND OUT MORE REFERENCES ON ATEIS WEBSITE !**



**ATEIS Europe B.V.**  
**Europe & Africa**  
 Celsiusstraat 1 - 2652 XN Lansingerland  
 (Rotterdam Region), Netherlands  
 Tel: +31 (0)10 2088690  
 info@ateis-europe.com



**Penton Audio USA**  
**USA, Canada & Latin America**  
 21 Sabin Street Pawtucket, RI 02860, USA  
 Tel: +1 401-727-1600  
 Fax: +1 401-727-0003  
 info@penton-usa.com



**ATEIS France**  
 8, rue de l'Europe - ZA de Font Ratel,  
 38640 Claix, France  
 Tel: +33 (0)4 76992630  
 contact@ateis.com



**ATEIS China**  
 Room 610, No.255 Wubao Road, Minxing  
 district, Shanghai, China  
 Tel: +021-54495191/92  
 Fax: +021-54495193  
 sales@ateis.com.cn



**Penton UK Ltd.**  
**UK & Ireland**  
 Unit 2, Teville Industrials, Dominion Way, Worthing  
 West Sussex, BN14 8NW, United Kingdom  
 Tel: +44 (0)1903 215315  
 Fax: +44 (0)1903 215415  
 sales@pentonuk.co.uk



**Xavtel Communications RUS Ltd.**  
 Russian Federation, 115280, Moscow  
 Leninskaya Sloboda str., 26 bld. 28,  
 Business Center "Slobodskoy", oce#122  
 Tel/Fax: +7 495 803 3655  
 info@xavtel.ru.com



**ATEIS Far East Corp.**  
**Far-East Asia**  
 2F No.60, Xinghua 2nd Rd. Tanzi,  
 Taichung, Taiwan  
 Tel: +886 4 25333840  
 Fax: +886 4 25333830  
 sales@ateis-fareast.com



**ATEIS Suisse SA**  
 Avenue des Baumettes 9, 1020 Renens VD,  
 Switzerland  
 Phone: +41 (0)218812510  
 Fax: +41 (0)218812509  
 info@ateis.ch



**ATEIS Middle East FZCO.**  
**Middle East & India**  
 LIU No. 11, Dubai Silicon Oasis,  
 293640 Dubai, United Arab Emirates  
 Tel: +971 (4) 3262730  
 Fax: +971 (4) 3262731  
 info@ateis.ae



**ATEIS SE PTE. LTD.**  
**South-East Asia**  
 Blk 5002 Ang Mo Kio Ave 5, #03-01B TECHplace  
 II, Singapore 569871  
 Phone: +65 6481 1968  
 Fax: +65 6481 1960  
 info@ateis-se.com.sg